

WARRANTY

PRODUCT WARRANTY

This product has passed the strict quality control and inspection processes of technicians, passed the inspection by the international Conformity Certification Program.

If the product is found to be defective, or goes out of order during normal usage within the warranty period, it will be repaired, and/or defective parts replaced, free of charge.

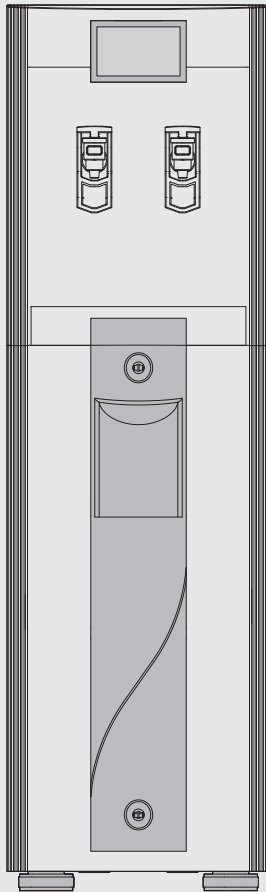
WARRANTY GUIDE

1. The warranty period is 12 months from date of purchase.
2. In following case, the product will be repaired at cost.
 - a) After expiry of free warranty period.
 - b) Malfunction of caused by careless or abnormal use.
 - c) Malfunction of caused by natural disaster.

Product	Model	WP-2203LD	
	Type approval No.		
	Manufacturing Date		
Purchase Date	Year	Month	Day
Purchaser Name			
Dealer			

HOT&COLD WATER PURIFIER OPERATION MANUAL

WP-2203LD



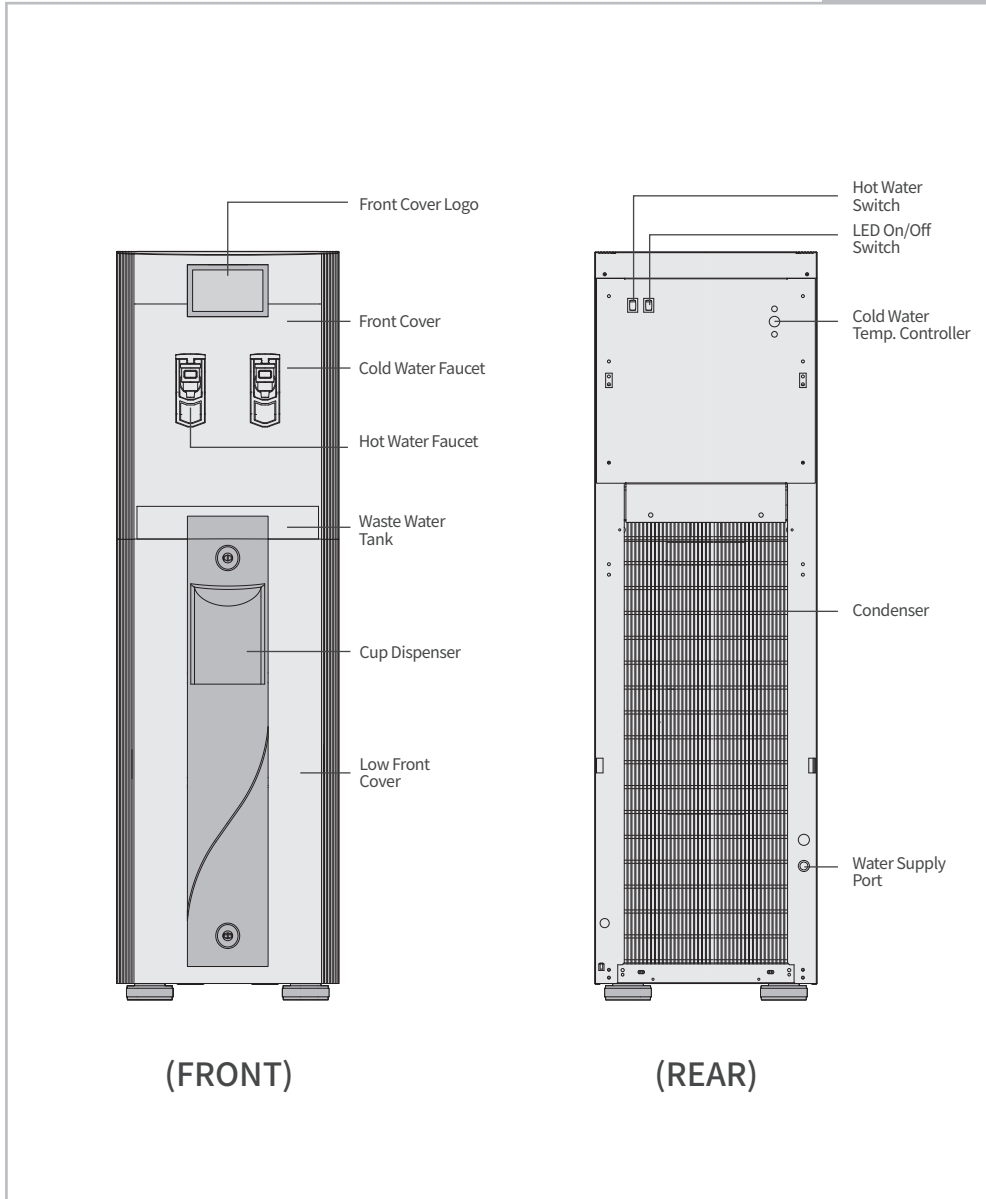
To keep the best working condition and guarantee long life,
read this manual carefully before you operate this equipment.



1. Exterior Diagram

Model No / WP-2203LD

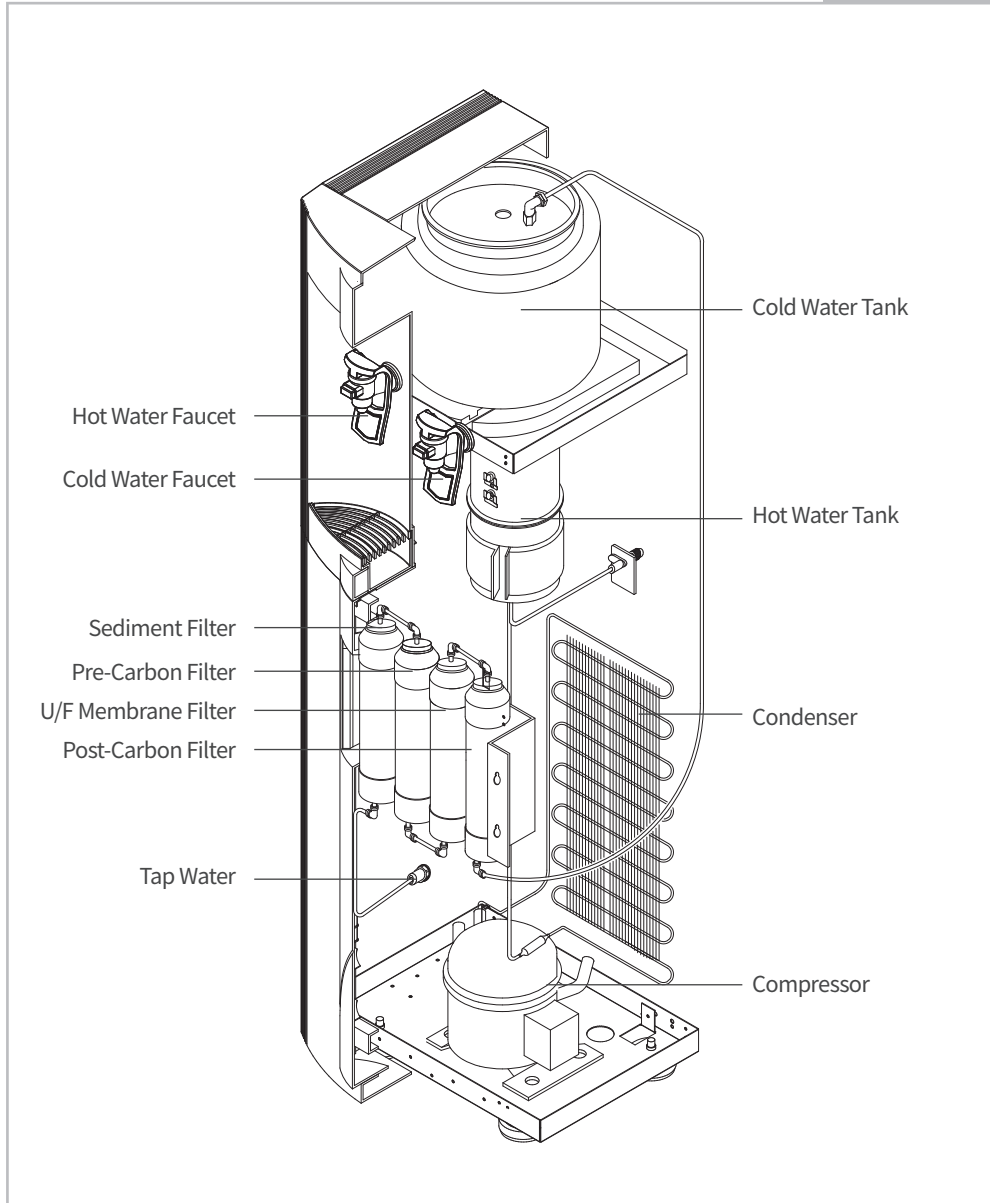
Hot&Cold function



2. Interior Diagram

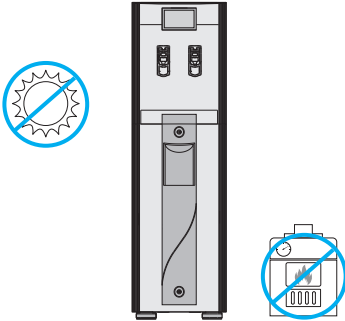
Model No / WP-2203LD

Hot&Cold function

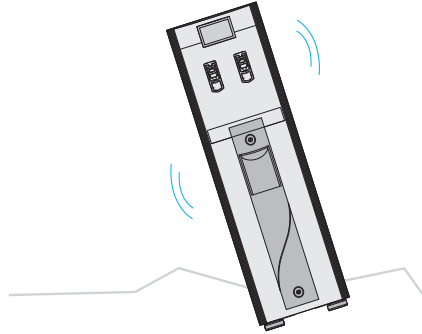


3. Precautions

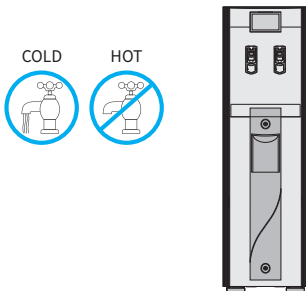
1. Avoid the heat and direct sunlight.



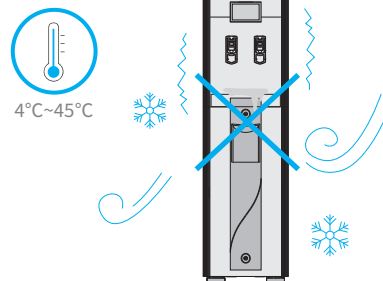
2. Set the unit on a level floor.



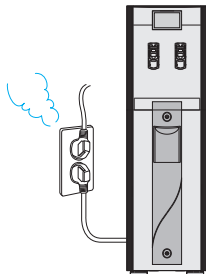
3. Connect only to the cold water supply line.
It is harmful to the cartridges to connect to hot water.



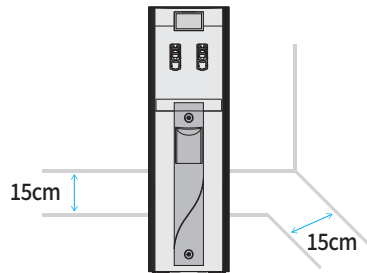
4. The temperature of the installation area should remain between 4°C and 45°C.
Temperature outside of this range may shorten the life filter.



5. Check the electric power. The plug should be rated for more than 12A.



6. Maintain sufficient distance from wall,
at least 15cm.

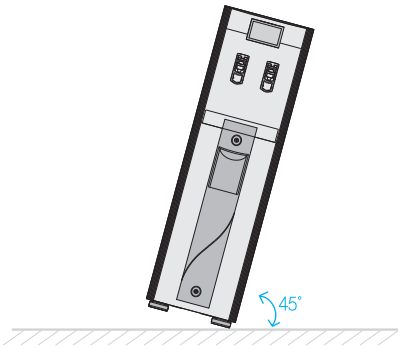


4. Installation

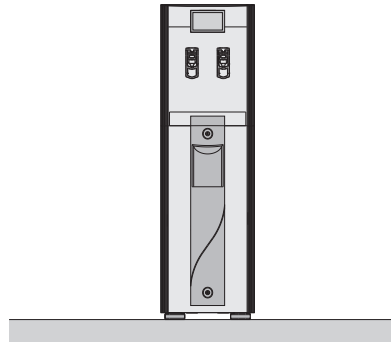
1. Gently remove unit from the carton.

2. Remove all shipping tape used to secure parts.

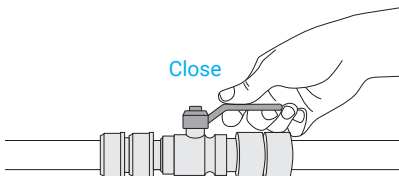
3. Do not tilt the unit more than 45° while moving it.



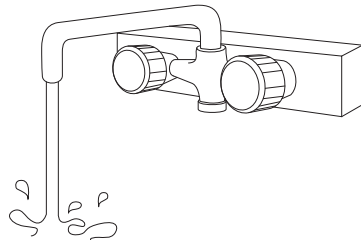
4. Place the unit on a level floor.



5. Located the COLD water shut off valve and line under sink. Shut off the cold water.

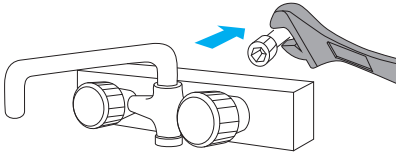


6. Open the tap faucet and drain the remaining water in pipe.

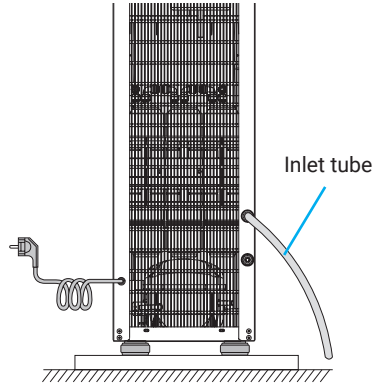


4. Installation

7. Detach the faucet from the water pipe and connect the main water adaptor to the water pipe.

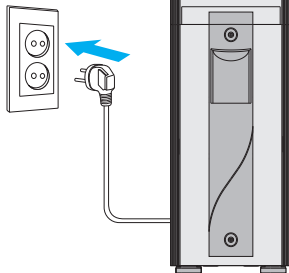


8. Connect the inlet tube to the adaptor.

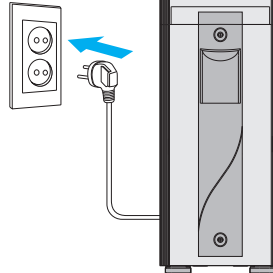


9. Do not use the unit for at least one hour after the product has been moved to its firm location.

1 hour more

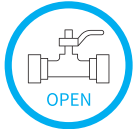


10. Wait to turn on power until you fill the hot and cold water tanks.

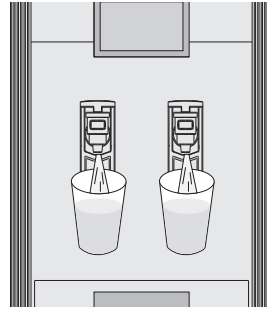


5. Product Use

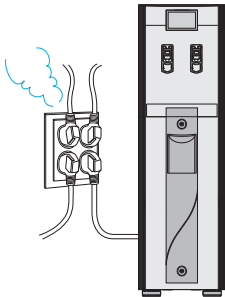
1. Open the feed water valve after completing installation.



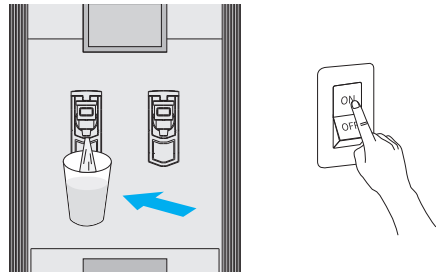
2. Drain water from the hot and cold water taps on the unit for 30 seconds.



3. Plug the power cord into outlet. Do not overload the outlet with too many plugs.



4. When the water begins to run from the hot water tap, turn on the hot water switch located on the back.



5. Turning on the switch will turn on the hot and cold water lights.
6. After plugging in the unit, wait 15 minutes before using the hot water.
The temperature of the hot water will reach between 75~90°C.
Wait 30 minutes before using the cold water which will be cooled to 4~12°C.
7. If you have not used the unit for more 4 days, extract water by using the drain cap.
8. If you don't plan to use the hot water, turn off the hot water switch to protect children from the burning themselves.

6. Maintenance

■ Cleaning the product.

- Always unplug the power cord before cleaning the unit.
- Never use detergents or chemicals.
- Wipe the front and back of the unit with water-soaked, soft cloth.
- Do not spray water directly on the surface of the unit.
- If dust or other foreign substance has accumulated on the condenser, wipe it off with a water—soaked, soft cloth.
- After cleaning the product, completely dry it before applying electric power.

Part to be cleaned	Frequency	Cleaning Method
Drip Tray	Twice daily	Wipe off with a mild detergent.
Hot/Cold Water Taps	Once Daily	Wipe first with a damp cloth and then again with dry cloth.
Exterior	Every 3 days	Wipe with a damp cloth. Do not use harsh chemicals as they may change the surface color or scratch the surface.

■ If the product won't be used for a prolonged period.

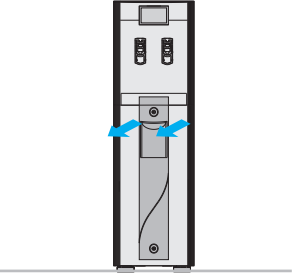
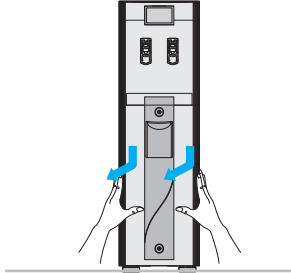
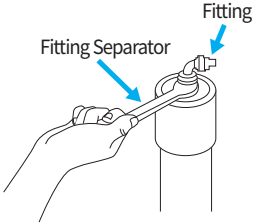
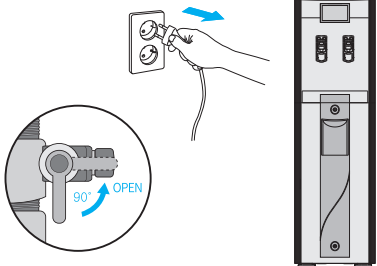
- Water can be drained completely by loosening the Hot and Cold water caps.
- Wipe dry any remaining surface moisture from each part of the product.
Damp surface will create rust.
- Wrap the product in its original plastic bag and corrugated paper used for Shipping, before storage, to prevent from being damaged by rust, dust and other foreign substances.
- Unplug the power cord.

■ Suggested Filter Replacement Cycle :

- Sediment Filter : Every 6 months
- Pre-carbon Filter : Every 6 months
- U/F Membrane Filter: Every 18 months
- R/O Membrane Filter : Every 2 years
- Post-carbon Filter : Every 12 months

7. Filter Replacement

■ When replacing filter, unplug the power-cord and close the main feed-water valve.

<p>1. Detach the waste water tank from the product.</p> 	<p>2. Detach the front lower cover by pulling down it.</p> 
<p>7. After replacing filter, re-assemble back the front cover and screw. (After feed-water is turned-on, check any leakage of water.)</p> 	<p>8. Open the water supply valve and insert the electric power plug.</p> 

■ Replacement Tips

- Replace filters according to the suggested frequency on page 8.
- Using filter longer than recommended may lower the quantity and quality of water produced.
- The life of a filter depends on the feed water quality and the water consumption.
- Contact a Customer Service Representative to order filter replacements.

8. Product specifications

Product Name	Hot/Cold Water Purifier
Model No.	WP-2203LD
External Dimensions(mm)	350(W) x 340(D) x 1156(H)
Weight	Abt. 27Kg
Compressor	1/10 HP(R-134a) or 1/13 HP(R-600a) Sealed Type
Condenser	Wire Type
Motor Power Consumption	120W
Refrigerant	R-134a or R-600a
Cold Water Tank	STS 304, 3 Liters
Cold Water Capacity	20 Cups at 4~12°C
Temperature Control	Thermostat(in Cold)
Cooling	Forced Cooling Type
Heater Power Consumption	430W
Hot Water Tank	STS 304, 1.8 Liters
Hot Water Capacity	15 Cups at 75~90°C
Heater	Band Heater
Temperature Control	Bi-metal (Auto return)
Overheat Protection Device	Bi-metal (Manual return)
Power Cord Length	2m
Front Cover	Durable ABS Plastic
Side Panel	EGI
Faucet	ABS Assembly
Insulated wire	E Type
Regulated Power	AC 220-240V/50,60Hz
Purification type	U/F Filtration Type
Filtration System	Sediment filter, Pre-carbon filter,U/F filter, Post carbon filter *Other filtration system is available upon your request.

9. Solutions to Common Problems

State	Cause	Countermeasure
Unit does not have power	<ol style="list-style-type: none"> 1. improper power cord. 2. Defective power cord. 3. Bad fuse. 	<ul style="list-style-type: none"> • Use 220-240V power cord supplied. • Replace power cord. • Replace fuse (250V/10A).
Cold water is too warm	<ol style="list-style-type: none"> 1. Poor ventilation to the back of the unit. 2. Temperature of supplied water is too warm. 3. The thermostat is not set low enough. 	<ul style="list-style-type: none"> • Maintain at least 20cm from wall for a good ventilating. • Temperature of supplied water should be below 30°C. • Move the thermostat controller to more colder place.
Unit is making unusual sounds	<ol style="list-style-type: none"> 1. Installed floor purifier is not horizontal. 2. Unit is touching something else. 	<ul style="list-style-type: none"> • Place purifier on hard, level surface. • Move unit so that it is not touching anything.
Hot water is too cold	<ol style="list-style-type: none"> 1. Power is not on. 2. Water level is too low. 	<ul style="list-style-type: none"> • Confirm power is on. • Check water supply and fill storage tank.
Water Leakage	<ol style="list-style-type: none"> 1. Hose connection is loose. 	<ul style="list-style-type: none"> • Confirm hose connection.
Decreased water production	<ol style="list-style-type: none"> 1. Hose connection is loose. 2. Filters need to be replaced. 	<ul style="list-style-type: none"> • Confirm hose connection. • Replace filters.
Water tastes stale	<ol style="list-style-type: none"> 1. Life of Post Carbon Filter is expired. 2. Cold water tank is dirty. 	<ul style="list-style-type: none"> • Replace Post Carbon Filter. • Clean cold water tank. • Replace all filters and clean the cold water tank
Water has ice particle in it	<ol style="list-style-type: none"> 1. Thermostat is set too low. 	<ul style="list-style-type: none"> • Adjust the thermostat setting to a higher temperature.
Storage tank fills unusually slow (more than three hours)	<ol style="list-style-type: none"> 1. Life of UF Membrane Filter or RO Membrane Filter is expired. 	<ul style="list-style-type: none"> • Replace UF Membrane Filter or RO Membrane Filter. • Check tubing for kinks.