

# HOT&COLD WATER PURIFIER OPERATION MANUAL

WHP-3100/3110



## ◆ FOR YOUR SAFETY

- Precautions ..... 2~5

## ◆ FOR INFORMATION

- Name of each part ..... 6
- Filtration system ..... 7~8
- Features ..... 9
- WHP-3100 Operation/Indication part ..... 10
- WHP-3100 How to use ..... 11~14
- WHP-3110 Operation/Indication part ..... 15
- WHP-3110 How to use ..... 16~18
- Filter replacement ..... 19~20
- CO<sub>2</sub> cylinder replacement (WHP-3100) ··· 21
- Solution to common problems ..... 22~23
- How to clean and the cleaning cycle ..... 24
- Specifications ..... 25
- Warranty Card ..... 26

We cannot take any responsibility  
for any damage caused by not using  
our genuine filter or part.

# PRECAUTIONS

- Please read carefully following precautions to avoid unpredictable dangers and damages.
- Depending on the degree of danger and damage that could occur by improper use, precautions are divided into 3 types as below.



If not observed, serious injury or even death could occur.



If not observed, serious injury or property damage could occur.



If not observed, slight injury or property damage could occur.



This mark is for calling attention to dangers caused by improper use. Please read carefully and follow the precautions.

## Precautions for installation



**Please do not install the unit at a moist place like bathroom, shower room or outdoor.**

- ▶ Failure to do so can cause a fire or electric shock.



**Do not let the inlet hose be twisted or bended.**

- ▶ Failure to do so can cause water leakage and electric shock.



**Avoid heat and direct sunlight.**

- ▶ Failure to do so can cause deformation of the exterior.



**Place the unit on a level surface and hard floor.**

- ▶ Failure to do so can cause malfunction.



**Connect the unit only to the cold water pipe.**

- ▶ Failure to do so can cause be harmful for filters to connect to hot water.
- ▶ The new hose-sets enclosed with the water purifier should be used instead of old hose-sets.



**Maintain a sufficient distance from the wall for ventilation. At least 20cm away is recommended.**

- ▶ Failure to do so can cause malfunction.

## Precautions for power supply



**This product must be plugged into AC220V outlet.**

- ▶ Failure to do so can cause a fire or electric shock.



**Before use, please wipe dust or other foreign substances off on the plug.**

- ▶ Failure to do so can cause a fire or electric shock.

# PRECAUTIONS



**Please do not use when the plug is damaged or swinging.**

- ▶ Failure to do so can cause a fire or electric shock or leakage.



**Before replacing filter, please unplug the power cord.**

- ▶ Failure to do so can cause electric shock.



**Please do not try to bend, tie or pull the power cord.**

- ▶ Failure to do so can cause a fire or electric shock.



**The outlet should be rated for more than 16A. Use a separate outlet for the unit.**

- ▶ Do not plug too many cords into the outlet. Failure to do so can cause a fire.



**Please do not disassemble or modify the plug.**

- ▶ Failure to do so can cause a fire or electric shock.



**Please do not plug in or unplug the power cord with wet hands.**

- ▶ Failure to do so can cause electric shock.

## Precautions for use



**Do not apply severe impacts to the unit.**

- ▶ Failure to do so can cause malfunction, damage or electric shock.
- ▶ If the supply cord is damaged, it must be replaced by the manufacturer, its service agent or similarly qualified persons in order to avoid a hazard.



**Do not attempt to repair, disassemble or transform.**

- ▶ Failure to do so can cause a fire or electric shock.



**Do not insert sharp wire or screwdriver into the unit.**

- ▶ Failure to do so can cause malfunction or electric shock.



**Be careful not to get burned by hot water.**

- ▶ Failure to do so can cause a scald.



**Do not tilt the unit more than 45°C while moving it.**

- ▶ Failure to do so can cause malfunction.



**Do not move the unit while it is being operated.**

- ▶ Failure to do so can cause malfunction.



**Do not put heavy stuff on the unit.**

- ▶ Failure to do so can cause damage to the unit.



**When water supply is cut off, unplug the power cord.**

- ▶ Failure to do so can cause malfunction.

# PRECAUTIONS

## Precautions for use



**DO NOT use Benzene or gasoline when cleaning the product.**

- ▶ Failure to do so can cause discoloring, peeling and/or damage to the exterior of the product.



**Close the main water supply valve and unplug the power cord when not using the unit for a long time.**

**Before use it again, drain more than 3 liters of hot and cold water.**

- ▶ Failure to do so can cause a fire or water leakage.



**MAKE SURE that the cold water tank lid is securely shut, before using.**

- ▶ Failure to do so can cause insects and/or foreign objects to enter the tank.



**When replacing filters, always use genuine filters.**

- ▶ Failure to do so can cause poor performance and poor water quality.



**When discarding parts/filters and/or disposing the product entirely, please adhere to local guidelines.**

- ▶ Failure to do so can cause environmental pollution.



**DO NOT install the product in severe and extreme temperatures.**

- ▶ Failure to do so can cause overheating or freezing.



- The appliance is with refrigerant gas, ISOBUTANE(R600a). It is a natural gas without environmental impact, but is flammable.
- The appliance must be transported and moved with a maximum care not to be excessively struck or shaken. Failure to do so might cause a breakdown.
- Keep ventilation openings, in the appliance enclosure or in the built-in structure, clear of obstruction.
- Make sure the refrigerant circuit is not damaged. Gas leak may result in a spark or flame, even explosion.
- Do not, on any account, run the appliance if it seems to be damaged.
- In case of damage, contact the service center and ventilate a room. Do not work or open flames near the broken appliance.

# PRECAUTIONS

## Precautions for WHP-3100(Sparkling)



**The exhausted CO<sub>2</sub> cylinder needs replacing.**

- ▶ Failure to do so can cause a fire or electric shock.



**Do not use for the purpose of changing the water in a fish bowl or aquarium.**

- ▶ CO<sub>2</sub> gas in water is harmful for fish and sometimes it causes fish kills.



**Replace old one to our genuine CO<sub>2</sub> cylinder.**

- ▶ There could be gas leakage or explosion of gas cylinder in inappropriate use.



**Avoid direct sunlight, heat or fire. Never leave CO<sub>2</sub> cylinder in your vehicle, especially during the high summer temperature months. Store at a ventilated cool place.**



**Be careful of injury or damage on product that may be caused by pressure due to remaining gas in CO<sub>2</sub> cylinder when replacing it.**

- ▶ Refer 'CO<sub>2</sub> cylinder replacement (WHP-3100)' in P21.



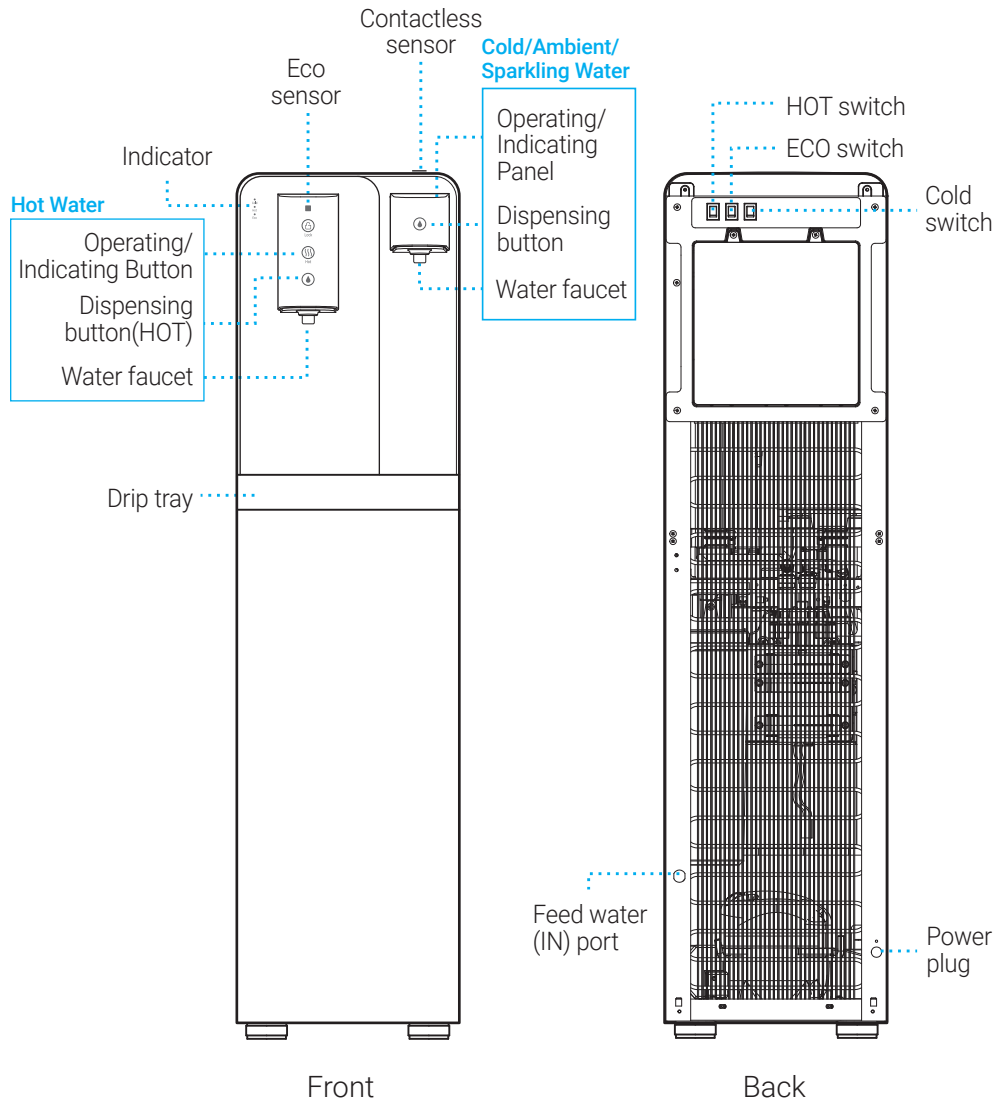
**Do not attempt to disassemble, puncture, incinerate or modify the CO<sub>2</sub> cylinder.**

- ▶ Failure to do so can cause explosion.



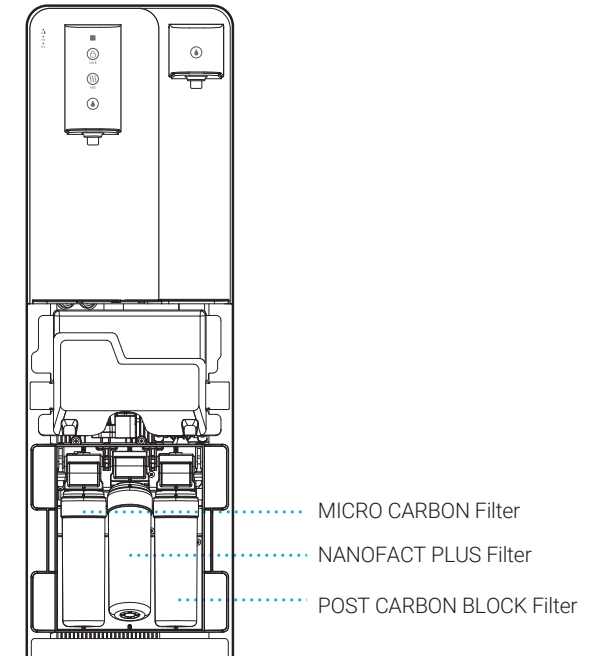
- This appliance can be used by children aged from 8 years and above and persons with reduced physical, sensory or mental capabilities or lack of experience and knowledge if they have been given supervision or instruction concerning use of the appliance in a safe way and understand the hazards involved.
- Children shall not play with the appliance.
- Cleaning and user maintenance shall not be made by children without supervision.
- This appliance is intended to be used in household and similar applications.
- The instructions state that the appliance is to be supplied through a residual current device (RCD) having a rated residual operating current not exceeding 30mA.
- The instructions state that the appliance is considered to be suitable for use in countries having a tropical climate, but may also be used in other countries.

## Name of each part



## Filtration system

### Filters

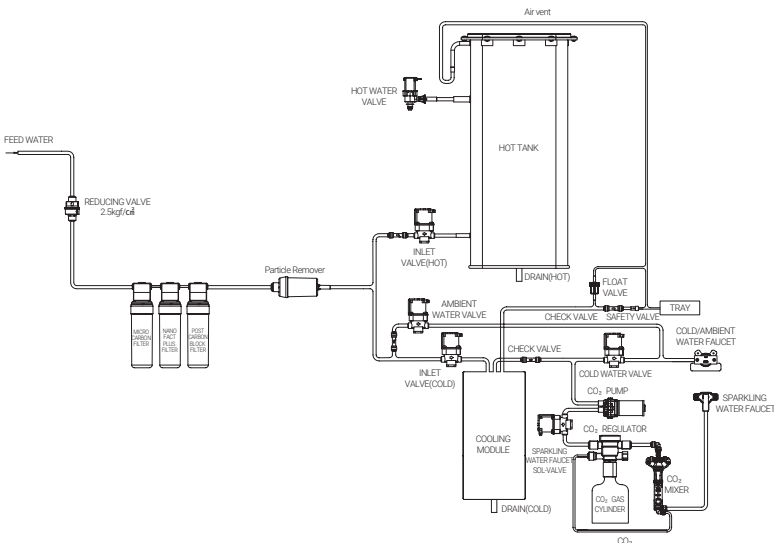


### Expected Replacement

	1ST STEP	2ND STEP	3RD STEP
<b>Filter name</b>	MICRO CARBON FILTER	NANOFACT PLUS FILTER	POST CARBON BLOCK FILTER
<b>Recommended Replacement</b>	4 Months	12 Months	12 Months
<b>Material</b>	Compressed carbon	Cellulose, Compressed carbon	Compressed carbon
<b>Function</b>	Removing sediment particles more than 5µm in size and absorbing some of harmful organic chemicals.	Removing water contaminants such as waterborne bacteria and virus, improving the taste of water.	Removing residual Chlorine and VOCs(volatile organic compounds), improving the taste of water

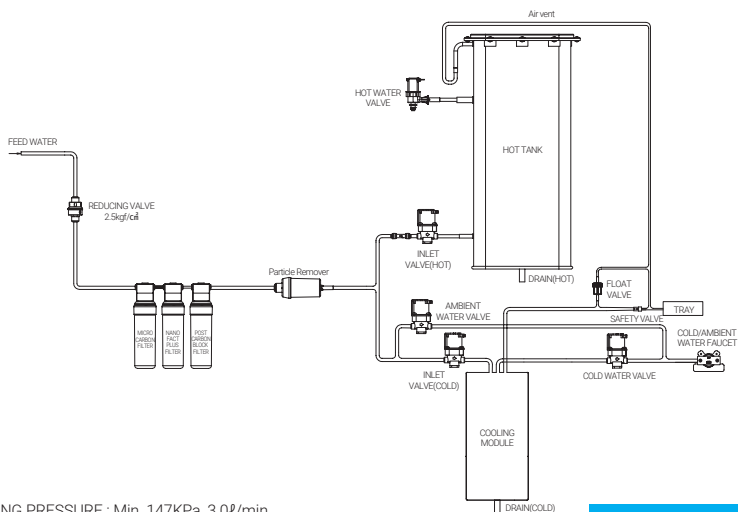
※ The filter replacement cycle may vary depending on feed water quality and consumption.

## Water filtration process



■ WORKING PRESSURE : Min. 147KPa, 3.0ℓ/min

Model No. WHP-3100



■ WORKING PRESSURE : Min. 147KPa, 3.0ℓ/min.

Model No. WHP-3110



### ◆ Direct cooling system

- Not necessary to clean or manage the tank due to the cooling system struction avoiding pollutants outside.

### ◆ Self UV LED sterilization system

- Sterilizing water in the faucet for 10 minutes every 1 hour by using UV LED for ensuring the cleanness of faucet.

### ◆ Thorough filtration system

- MICRO CARBON FILTER : Removes sediment particles more than 5µm in size and absorbing some of harmful organic chemicals.
- NANO FACT FILTER : Removes water contaminants such as waterborne, bacteria and virus, improves the taste of water
- POST CARBON BLOCK FILTER : Removes residual Chlorine and VOCs (volatile organic compounds), improves the taste of water.

### ◆ Power saving function

- Power saving at night by ECO(illumiance sensor) function
- The ECO sensor automatically stops water heating and chilling to save electricity when it notices that illumiance around the unit darkens at night.
- You can save electricity by turning off hot or cold switch when using only one sort of water.

### ◆ Separable water faucet

- Separable water faucet makes cleaning simple for enhanced hygiene.

### ◆ High performance hot tank

- Provides more than 20 cups of hot water at 90°C or higher by utilizing water boiler technology into our newly designed hot tank.

### ◆ Two height options for extraction

- 197mm for cups, smaller bottles.
- 280mm for sport water bottles.

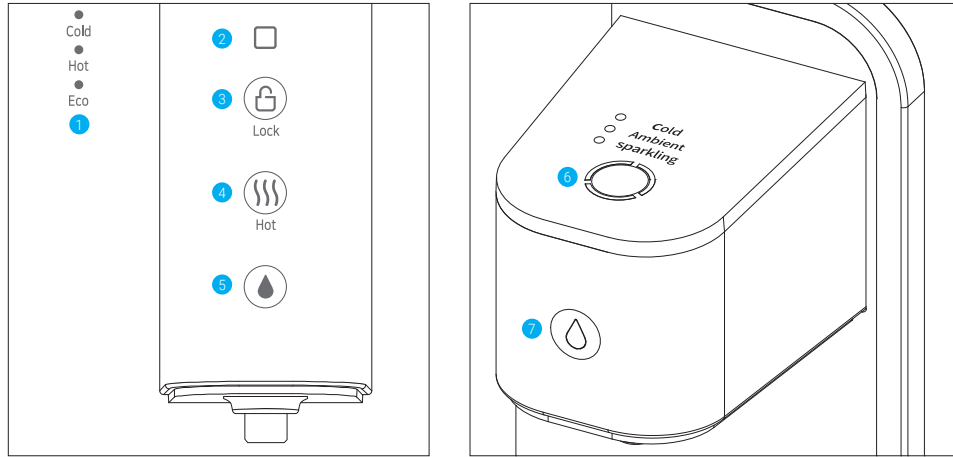
### ◆ Touch free dispensing

- Integrated contactless sensor keeps your fingers away from cross contamination.

### ◆ Sparkling water (WHP-3100)

- Serves carbonated water combining the integrated CO<sub>2</sub> cylinder.

# WHP-3100 Operation/Indication part



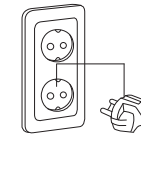
- ① **FUNCTION INDICATOR** Cold water/hot water/ECO
- ② **ECO(LIGHT)SENSOR** Save electricity by deactivating hot water mode when it detects that illuminance around the unit darkens at night.
- ③ **SAFETY LOCK BUTTON** Protect children from any problems by careless use. Activates by touching and holding the button for more than 5 seconds.
- ④ **HOT WATER BUTTON** Activates hot water by touching the button. This button lights up in order to use hot water.
- ⑤ **DISPENSING(HOT) BUTTON** Touch the button to dispense hot water.
- ⑥ **FUNCTION BUTTON** Activates cold/ambient/sparkling water by touching. the activated function lights on.
- ⑦ **DISPENSING BUTTON** Touch the button to dispense cold/ambient/sparkling water.

# WHP-3100 How to use

※ For your safety and proper use of the product, please read and understand the following before use.

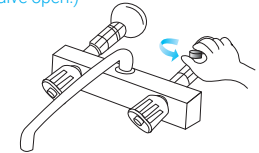
## 1. Plug the power cord.

※ Before plugging, please check if the voltage rate is matched.

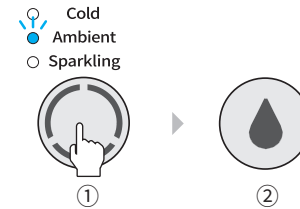


## 2. Open the water supply valve.

※ If water supply valve is closed, the water purifier doesn't work.  
(Except in case of going outside for a long time, leave the valve open.)

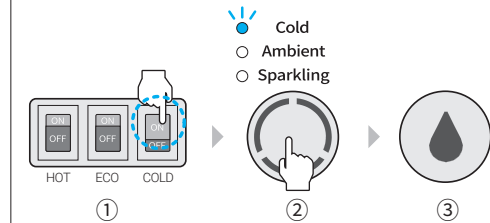


### 1) TO DRINK AMBIENT WATER



- ① Touch the 'FUNCTION' button to select the ambient water mode. The 'Ambient LED' lights on.
- ② Touch 'DISPENSING' button to dispense ambient water. When dispensing water, its LED blinks.
- ③ Hold the 'DISPENSING' button to keep dispensing water.

### 2) TO DRINK COLD WATER



- ① Turn on the cold switch at the back of the unit.  
※ In initial use of the product, it takes about 1 hour to get sufficiently chilled water after the cold switch is turned on.  
※ Before turning on the cold switch, make sure to check whether water comes out in the cold water mode.
- ② Touch the 'FUNCTION' button to select the cold water mode. The 'Cold LED' lights on.
- ③ Touch 'DISPENSING' button to dispense cold water. When dispensing water, its LED blinks.
- ④ Hold the 'DISPENSING' button to keep dispensing water.  
※ Extraction up to 1 minute.  
※ Sparkling function is based on the cold function. The cold function cannot be activated right after dispensing sparkling water (cold LED blinks)

## 3) TO DRINK SPARKLING WATER

- Cold
- Ambient
- Sparkling

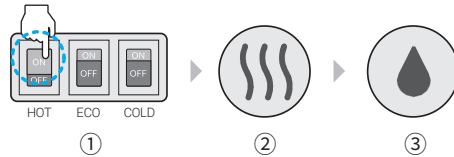


- ① Touch 'FUNCTION' button to select the sparkling water mode. The 'Sparkling LED' lights on.
- ② Touch 'DISPENSING' button to dispense sparkling water. When dispensing water, its LED blinks.
- ③ Hold the 'DISPENSING' button to keep dispensing water.
  - ※ Extraction up to 1 minute
  - ※ After dispensing the sparkling water, if there is blink on 'Cold LED', please wait to change the LED from the blinks to the lighting.
  - ※ The pressure due to remaining gas may cause water drops on a water cock.
  - ※ The concentration of CO<sub>2</sub> is subject to the temperature and surrounding environment.

### ※ Continuous water-dispensing

- By one touch of the 'DISPENSING' button, the water is dispensing out for 18 seconds.
- Touch the 'DISPENSING' button again to stop dispensing water.

## 4) TO DRINK HOT WATER



- ① Turn on the hot switch at the back of the unit.
  - ※ In initial use of the product, it takes about 1 hour to get sufficiently hot water after the hot switch is turned on.
  - ※ Before turning on the hot switch, make sure to check whether water comes out in the hot water mode.
- ② Touch the 'HOT WATER' button to select the hot water mode. The 'Hot LED' lights on.
- ③ Touch 'DISPENSING' button to dispense hot water. When dispensing water, its LED blinks.
- ④ Hold the 'DISPENSING' button to keep dispensing water.
  - ※ Extraction up to 1 minute
  - ※ There could be sound of boiling water.



TIPS FOR SPARKLING WATER

### TEMPERATURE

Sparkling water tastes best below 10°C. Recommend to sufficiently chill to enjoy.

### CO<sub>2</sub> cylinder

Even if you increase the concentration of CO<sub>2</sub> gas in CO<sub>2</sub> cylinder, the taste is weak or the pressure from which sparkling water comes out if it is low, the CO<sub>2</sub> cylinder must be replaced.

## 5) ADDITIONAL FUNCTION

### ① ECO mode

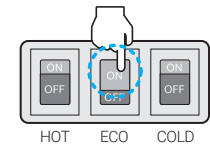
It helps to save an electricity consumption with a machine that intelligently turn off the hot water mode by detecting darkness such as night through the light sensor built-in.

#### To activate the ECO mode

Turn on the ECO switch at the back of the unit to activate the ECO function.

When ECO function is activated, the 'ECO LED' lights on.

※ ECO mode is applicable only when hot function is activated

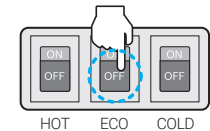


#### To deactivate the ECO mode

Turn off the ECO switch at the back of the unit to deactivate the ECO function.

When ECO function is deactivated, the ECO LED lights off.

※ Regardless of the ECO mode, if the light intensity sensor detect the darkness of surrounding, it will automatically lower the LED brightness on the control buttons for the prevention of dazzling.



### ② Safety lock mode

Safety lock mode is for protecting children from any problems by careless use.

#### To activate/deactivate the safety lock mode

- Touch and hold the 'Lock' button for more than 5 seconds to activate the safety lock function. The 'LOCK LED' lights on.

- Touch again the 'Lock' button to deactivate the safety lock mode and its LED lights off.

※ It is not available to dispense hot water in the safety lock mode. When touching the hot water button, its button blinks and sounds.

※ Setting will be initialized after pull out the plug and pull in.

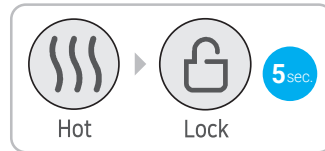


### ③ Buzzer ON/OFF function

Turn the buzzer sound on/off when touch the buttons.

#### To turn buzzer on

Touch the 'hot water' button and the 'lock' button simultaneously for more than 5 seconds to turn the buzzer on with 'RING' sound.



#### To turn buzzer off

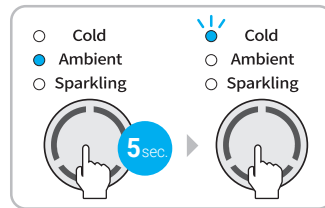
Touch the 'hot water' button and the 'lock' button simultaneously for more than 5 seconds to turn the buzzer off with 3 times of 'RING' sound.

### ④ To change default setting of dispensing water

- It is possible to set a frequently used water as the default mode for more convenient use.
- In initial use, cold water is set on a default.

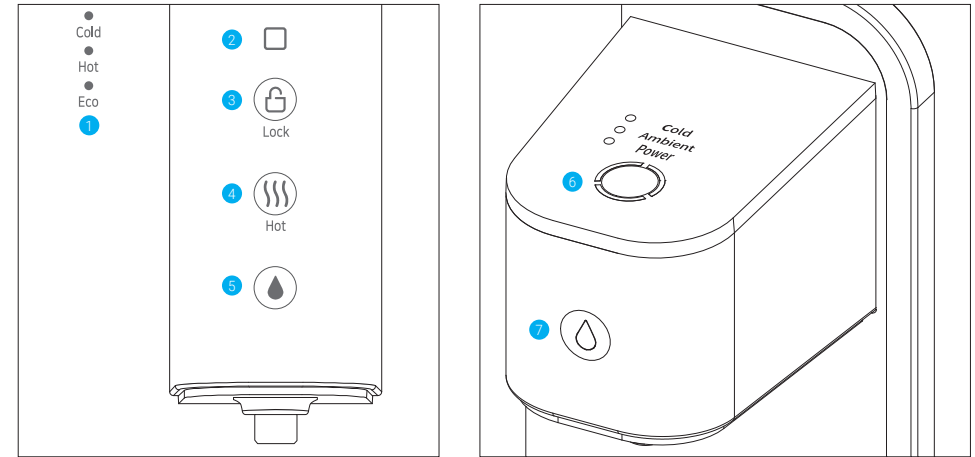
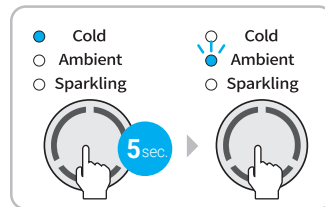
#### For cold water as default

- Touch the 'Function' button for more than 5 seconds to change the dispensing default from the ambient water to the cold water.
- Then, the 'Cold LED' blinks and sounds. Cold water is to be set as default.



#### For ambient water as default

- Touch the 'Function' button for more than 5 seconds to change the dispensing default from the cold water to the ambient water.
- Then, the 'Ambient LED' blinks and sounds. Ambient water is to be set as default.



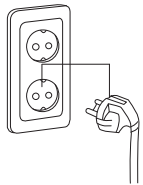
- FUNCTION INDICATOR** Cold water/hot water/ECO
- ECO(LIGHT)SENSOR** Save electricity by deactivating hot water mode when it detects that illuminance around the unit darkens at night.
- SAFETY LOCK BUTTON** Protect children from any problems by careless use. Activates by touching and holding the button for more than 5 seconds.
- HOT WATER BUTTON** Activates hot water by touching the button. This button lights up in order to use hot water.
- DISPENSING(HOT) BUTTON** Touch the button to dispense hot water.
- FUNCTION BUTTON** Activates cold/ambient water by touching. the activated function lights on. Power LED is on when the appliance is plugged in.
- DISPENSING BUTTON** Touch the button to dispense cold/ambient water.



※ For your safety and proper use of the product, please read and understand the following before use.

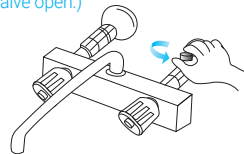
## 1. Plug the power cord.

※ Before plugging, please check if the voltage rate is matched.

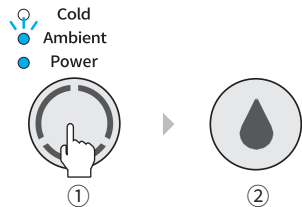


## 2. Open the water supply valve.

※ If water supply valve is closed, the water purifier doesn't work.  
(Except in case of going outside for a long time, leave the valve open.)

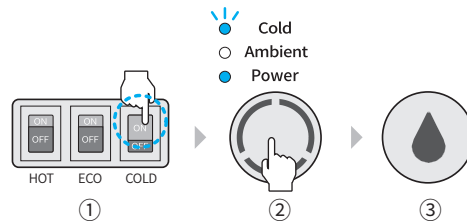


### 1) TO DRINK AMBIENT WATER



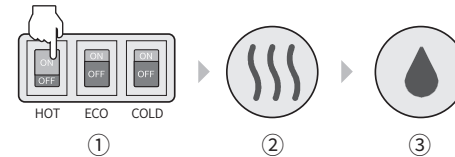
- ① Touch the 'FUNCTION' button to select the ambient water mode. The 'Ambient LED' lights on.
- ② Touch 'DISPENSING' button to dispense ambient water. When dispensing water, the 'Ambient LED' blinks.
- ③ Hold the 'DISPENSING' button to keep dispensing water.

### 2) TO DRINK COLD WATER



- ① Turn on the cold switch at the back of the unit.  
※ In initial use of the product, it takes about 1 hour to get sufficiently chilled water after the cold switch is turned on.  
※ Before turning on the cold switch, make sure to check whether water comes out in the cold water mode.
- ② Touch the 'FUNCTION' button to select the cold water mode. The 'Cold LED' lights on.
- ③ Touch 'DISPENSING' button to dispense cold water. When dispensing water, its LED blinks.
- ④ Hold the 'DISPENSING' button to keep dispensing water.  
※ Extraction up to 1 minute.  
※ Sparkling function is based on the cold function. The cold function cannot be activated right after dispensing sparkling water (cold LED blinks)

### 3) TO DRINK HOT WATER



- ① Turn on the hot switch at the back of the unit.  
※ In initial use of the product, it takes about 1 hour to get sufficiently hot water after the hot switch is turned on.  
※ Before turning on the hot switch, make sure to check whether water comes out in the hot water mode.
- ② Touch the 'HOT WATER' button to select the hot water mode. The 'Hot LED' lights on.
- ③ Touch 'DISPENSING' button to dispense hot water. When dispensing water, its LED blinks.
- ④ Hold the 'DISPENSING' button to keep dispensing water.  
※ Extraction up to 1 minute. ※ There could be sound of boiling water.

#### ※ Continuous water-dispensing

- By one touch of the 'DISPENSING' button, the water is dispensing out for 18 seconds.
- Touch 'DISPENSING' button again to stop dispensing water.

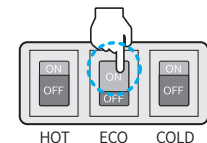
### 4) ADDITIONAL FUNCTION

#### ① ECO mode

It helps to save an electricity consumption with a machine that intelligently turn off the hot water mode by detecting darkness such as night through the light sensor built-in.

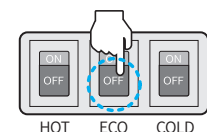
#### To activate the ECO mode

Turn on the ECO switch at the back of the unit to activate the ECO function. When ECO function is activated, the 'ECO LED' lights on.  
※ ECO mode is applicable only when hot function is activated.



#### To deactivate the ECO mode

Turn off the ECO switch at the back of the unit to deactivate the ECO function. When ECO function is deactivated, the 'ECO LED' lights off.  
※ Regardless of the ECO mode, if the light intensity sensor detect the darkness of surrounding, it will automatically lower the LED brightness on the control buttons for the prevention of dazzling.



## ② Safety lock mode

Safety lock mode is for protecting children from any problem by careless use.



### To activate/deactivate the safety lock mode

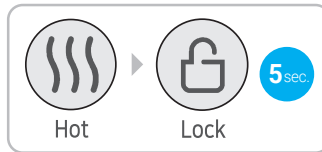
- Touch and hold the 'Lock' button for more than 5 seconds to activate the safety lock function with its LED light on.
- Touch again the 'Lock' button to deactivate the safety lock mode and its LED lights off.
- ※ It is not available to dispense hot water in the safety lock mode. When touching the hot water button, its button blinks and sounds. ※ Setting will be initialized after pull out the plug and pull in.

## ③ Buzzer ON/OFF function

Turn the buzzer sound on/off when touch the buttons.

### To turn buzzer on

Touch the 'hot water' button and the 'lock' button simultaneously for more than 5 seconds to turn the buzzer on with 'RING' sound.



### To turn buzzer off

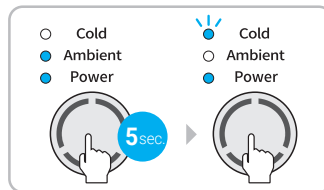
Touch the 'hot water' button and the 'lock' button simultaneously for more than 5 seconds to turn the buzzer off with 3 times of 'RING' sound.

## ④ To change default setting of dispensing water

- It is possible to set a frequently used water as the default mode for more convenient use.
- In initial use, cold water is set on a default.

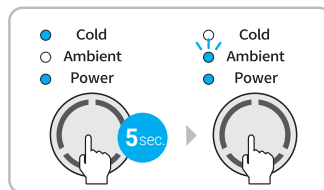
### For cold water as default

- Touch the 'Function' button for more than 5 seconds to change the dispensing default from the ambient water to the cold water.
- Then, the 'Cold LED' blinks and sounds Cold water is to be set as default.

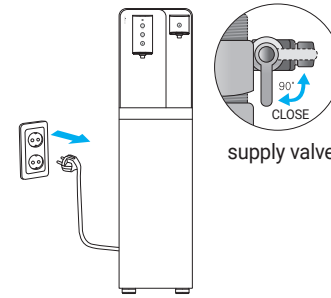


### For ambient water as default

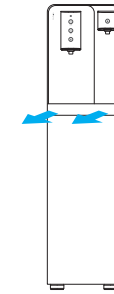
- Touch the 'Function' button for more than 5 seconds to change the dispensing default from the cold water to the ambient water.
- Then, the 'Ambient LED' blinks and sounds. Ambient water is to be set as default.



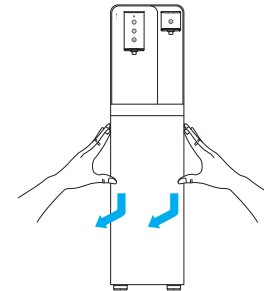
1. When replacing the filter, disconnect the power cord and close the water supply valve.



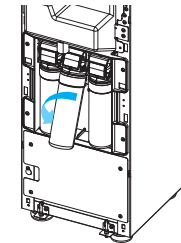
2. Remove the drip tray.



3. Push down on the top part of the lower panel and pull forward to remove it.



4. Lift the filter up and separate it from the filter head by turning it counterclockwise.

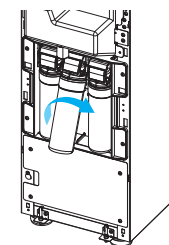


※ Filter replacement cycle

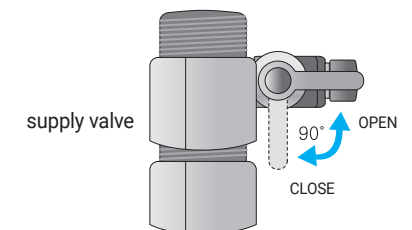
- ① MICRO CARBON : 4 months
  - ② NANOFAC PLUS : 12 months
  - ③ POST CARBON BLOCK : 12 months
- (Based on 10l/Day, a house use/4 people)

5. Remove the protection cap of the new filter and insert the new filter into filter head by turning it clockwise.

※ Please make sure that each filter is in the proper order of purification process.



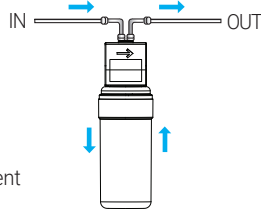
6. Open the water supply valve and connect power cord after assembling it in the reverse order.



# Filter replacement

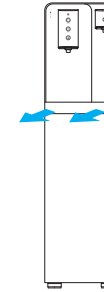
## Precautions for filter replacement

- Disconnect the power cord and close the water supply valve when replacing the filter.
- Black dust ash powder may come out after initial installation or replacement of carbon filter. It is just the fine powder of activated carbon that improves the taste of water.
- Proceed the filter flushing at least 10L of water till any black&white water or bubble doesn't appear from the filter when initially installing or replacing the filters.  
(Water Flushing : the process that allows water to flow for cleaning alien substance, dust, etc. in the initial use of filters.)
- Follow the filter replacement cycle to keep the water quality.
- The filter replacement cycle may vary depending on feed water quality and consumption.
- Even if your water consumption is not much, following regular filter replacement cycle is recommended.

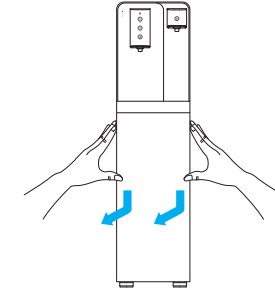


# CO<sub>2</sub> cylinder replacement (WHP-3100)

1. Remove the drip tray.

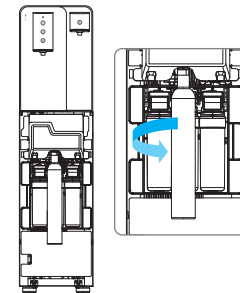


2. Push down on the top part of the lower panel and pull forward to remove it.



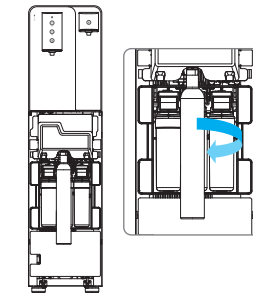
3. Lift the CO<sub>2</sub> cylinder up and separate it by turning it counterclockwise.

- ※ Be careful sounds by pressure due to remaining gas in CO<sub>2</sub> cylinder



4. Insert the new CO<sub>2</sub> cylinder into the head by turning it clockwise.

- ※ Always check carefully after replacing it.
- ※ If it is not tightly fastened, there might be sounds of gas leakage.



5. Open the water supply valve and connect power cord after assembling in the reverse order of disassembly.

- ※ Use TR21-4 Adapter for CO<sub>2</sub> cylinder refill.
- ※ It is designed for our genuine CO<sub>2</sub> cylinder only. Non-genuine products are not recommended.

## Solution to common problems

※ Please refer to the instructions below first and contact the service center if not solved.

Appearance	Expected Cause	Solutions
<b>Cold water is not extracted</b>	Low power supply	Check if the power supply is applied with 220V, and if not, apply with 220V.
	Issue with cold water indicator	Check if cold water indicator is on. If it is off, activate the cold water function by controlling the cold water switch on the back of the product.
<b>Water is not dispensed</b>	Usage period of filter is expired	Check the replacement cycle and contact service center.
	Water supply is cut off	Leave the power unplugged and re-start with filtration when the power is supplied.
	Connecting hose bending	If there is a bending in connecting hose, straighten the part.
<b>Water supply valve is closed.</b>		Open the water supply valve after replacing filters
<b>There is no water supply to cold water tank after using sparkling water.</b>		Wait till cold LED is on if cold LED is blinks. If cold LED is on, keep dispensing cold water till cold water come out.
<b>Noise occurrence</b>	Noise of water flow occurs	It's the sound made when the compressor stops or starts running. (There is no malfunction.)
	When the heater sounds for hot water heating	There is no malfunction. The hot water function operates normally and the water boils.
<b>Water Leaks</b>	Wrong assembly	Please contact our service center after the water valve is locked and stops it from operating.
<b>Decreased water production</b>	Filters need to be replaced.	Replace filters.
	Low pressure feed water	If low pressure water is supplied to the unit, less amount of filtered water is produced.

## Solution to common problems

※ Please refer to the instructions below first and contact the service center if not solved.

Appearance	Expected Cause	Solutions
<b>Unpleasant water taste or odors</b>	Not used for more than 3 days	Clear the water in the cold water tank and clean it before to use it.
	Kept in inapposite place for a long time	Clean the cold water hose and tank.
<b>Particles shown from the purified water</b>	Air bubbles generated during water supply	Reuse after watering more than 10 liters of purified water. If not solved still, contact our service center.
<b>Cold water extraction is available but hot water is not.</b>	Problem of water power indicator	Check if the hot switch at the back side of the unit turns on.
	Hot water thermostat shut off or heater problem	Turn off the hot switch and contact the service center.
<b>Cold water extraction is available but hot water is not. (hot water temperature indicator blinks)</b>	Malfunction of the sensor	Unplug the power cord and contact the service center.

※ If a problem comes up, contact a customer service center and get filter replacement or repair service.

※ We can not take responsibility for any damage caused by replacing filters by third party who is not our service man.

## How to clean and the cleaning cycle

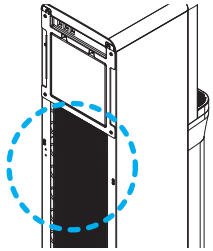
### How to clean

#### 1. Drip Tray

- ① Clean the drip tray once in a week
  - ※ By forming ice inside the cooling module, small volume of water comes out and drains into the drip tray. This is normal and not a malfunction.
- ② Separate the drip tray from the product and wash it with neutral detergent.

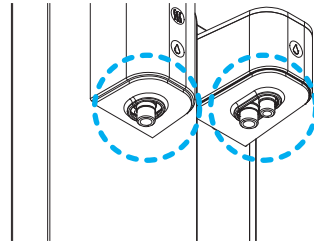
#### 2. Air Vent

- Remove dirt and dust from the air vent by using a vacuum cleaner once a month.
- ※ If the air vent is blocked with dust, it will affect cooling system negatively.



#### 3. Water faucet

- Separate the water faucet and clean it with running water. And reassemble it after it is dried.
- ※ Do not wipe the faucet with a scrubbing brush. It could cause corrosion.



### Cleaning Cycle

Parts	Cycle	How to clean
Outer Parts	once a week	Clean with a plastic cleaner and a damp cloth.
Drip Tray	frequently	Check frequently and wipe with a neutral detergent.
Tubing	once or more in two years	Inspect fittings or tubing regularly and replace them if necessary.
Water faucet	once a day	Remove the water intake faucet by turning it clockwise and wash it under running water.

## Specifications

Product name	SPARKLING HOT & COLD WATER PURIFIER	HOT & COLD WATER PURIFIER
Model no.	WHP-3100	WHP-3110
Product weight	34.2kg	30.3kg
External dimensions	300(W) x 415(D) x 1160(H) mm	
Power Supply	AC 220-240V/ 50Hz	
Cold water capacity	about 1.2ℓ	
Cold water temperature	about 4°C-12°C	
Motor power consumption	0.8A	
Heater power consumption	2000W – 2400W	
Hot water capacity	about 6.5ℓ	
Hot water temperature	80°C- 90°C	
Service condition	Working pressure : 127-490kPa	
	Working temperature : 5~35°C	
	Usable feed water : Tap water	

# PRODUCT WARRANTY

Product	Model	<input type="checkbox"/> WHP-3100	
		<input type="checkbox"/> WHP-3110	
	Date of Manufacture		
Date of Purchase	Year	Month	Day
Customer's Name			
Dealer's Name			

## WARRANTY GUIDE

1. The warranty period is 12 months from date of purchase.
  2. In following case, the product will be repaired at cost.
    - a) After expiry of free warranty period.
    - b) Malfunction of caused by careless or abnormal use.
    - c) Malfunction of caused by natural disaster.
    - d) In case this manual has been lost.
-