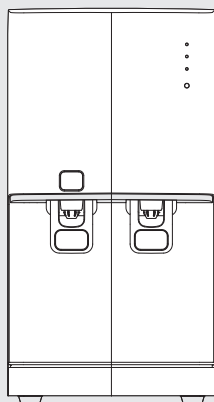
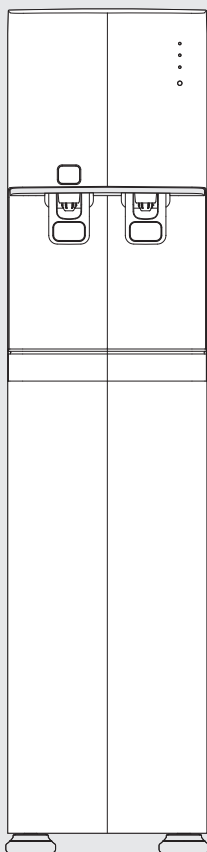


We cannot take any responsibility  
for any damage caused by not using  
our genuine filter or part.

# HOT&COLD WATER PURIFIER OPERATION MANUAL

WHP-4200/4200S    WHP-4210/4210S  
WHP-4240/4240S    WHP-4250/4250S



## ◆ FOR YOUR SAFETY

- Precautions ..... 2~6


## ◆ FOR INFORMATION


- Parts Identification ..... 7~8
- Filtration system ..... 9~10
- Features ..... 11
- How to use ..... 12~13
- UV Sterilization system ..... 14
- Filter replacement ..... 15~16
- Troubleshooting ..... 17~18
- Cleaning method ..... 19
- Specifications ..... 20
- Warranty card ..... 21


※ For your safety and proper use of the product, please read this User's Manual before use.  
※ Warranty card included in this Manual.


# Precautions

- Please read carefully and follow all guidelines to use safely and avoid equipment damage.
- The degrees of potential danger and equipment damage that could occur by improper use are divided into 3 types as per below.

 **Danger** : If not observed, risk of serious injury or even death.

 **Warning** : If not observed, serious injury or property damage is possible.

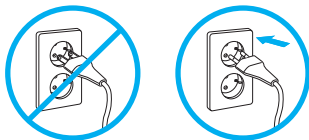
 **Caution** : If not observed, minor injury or property damage could occur.


 This warning sign is for highlighting potential risks caused by improper use. Please read carefully and follow all precautions.

## Precautions for Power Supply

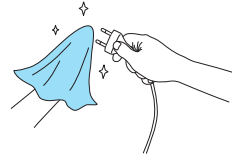
 **DANGER** This product must be plugged into AC220V-240V outlet.


※ Failure to do so may cause fire or electric shock.



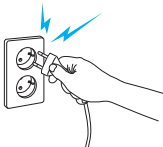
 **DANGER** Please clean dust and all foreign substances off the plug before use.


※ Failure to do so may cause fire or electric shock.



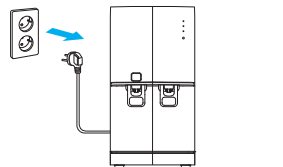
 **DANGER** DO NOT use when the plug is damaged or improperly connected.

※ Failure to do so may cause fire or electric shock. If the plug is damaged contact your nearest customer service center or place of purchase.



 **DANGER** Please disconnect plug from socket before replacing filter.

※ Failure to do so may cause fire or electric shock.

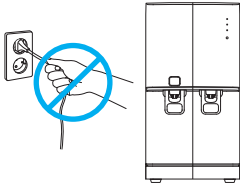


# Precautions

## Precautions for Power Supply

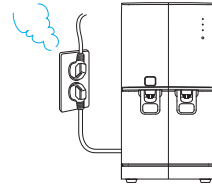
**DANGER** DO NOT try to bend, tie or pull the power cord.

※ Failure to do so may cause fire or electric shock.



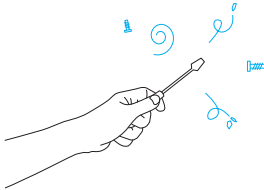
**DANGER** Use a single socket for the unit.

※ Do not plug multiple units into a single socket.



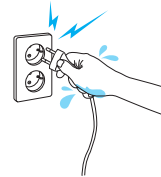
**DANGER** DO NOT disassemble or modify the Plug.

※ Failure to do so may cause fire or electric shock.



**DANGER** DO NOT touch socket with wet hands.

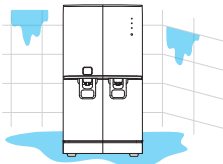
※ Failure to do so may cause an electric shock.



## Precautions for Use

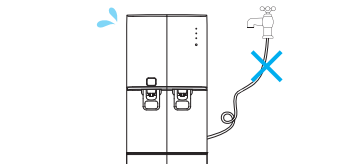
**DANGER** DO NOT install the unit in a high humidity area such as a bathroom, shower room or outdoors.

※ Failure to do so may cause a fire or electric shock



**DANGER** Keep the inlet hose free from kinks or bends.

※ Failure to do so may result in water leakage or an electric shock



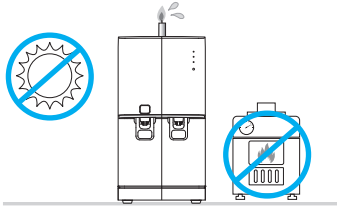
# Precautions

## Precautions for Installation



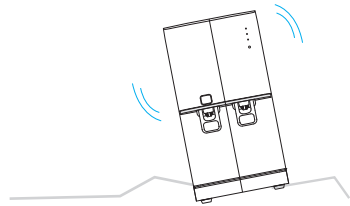
Avoid heat or direct sunlight.

※ Failure to do so may cause discoloration or deformity of the exterior.



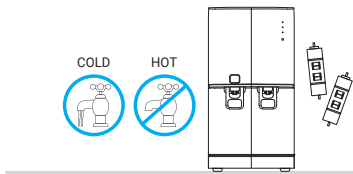
Place the unit on a level surface and hard floor.

※ Failure to comply may cause the unit to malfunction.



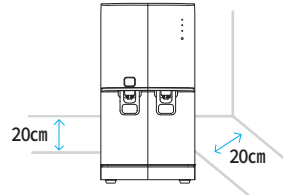
Connect the unit only to the cold water pipe.

※ It is harmful for filters to connect to the hot water supply.



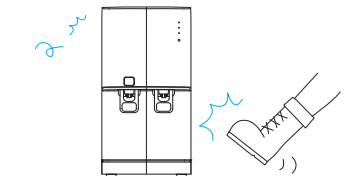
Maintain a sufficient distance from the wall for ventilation. At least 20cm is recommended.

※ Failure to comply may cause overheating.



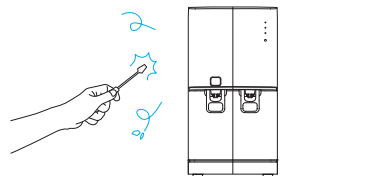
DO NOT apply force to the unit.

※ Failure to do so can cause water leakage or flooding.



DO NOT attempt to repair, disassemble or alter the unit.

※ Failure to do so may cause fire or electric shock.

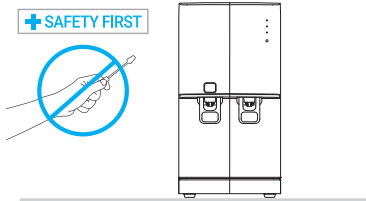


# Precautions

## Precautions for Use

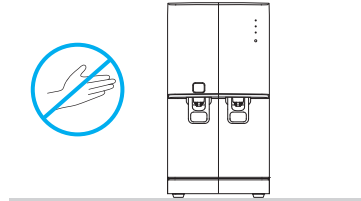
**DANGER** DO NOT insert sharp implements such as a screwdriver into the unit.

※ Failure to do so may cause malfunction or electric shock.



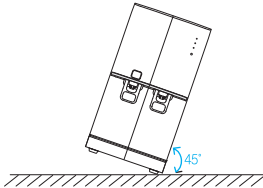
**DANGER** Caution is advised when using hot water.

※ Failure to do so may cause scalding.



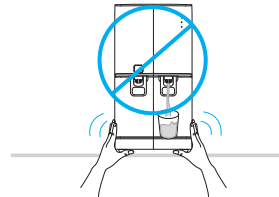
**CAUTION** DO NOT tilt the unit more than 45 ° while moving it.

※ Failure to do so may cause the unit to malfunction.



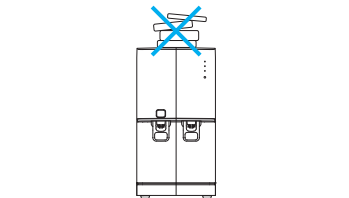
**CAUTION** Do not move the unit while in operation.

※ Failure to do so may cause the unit to malfunction.



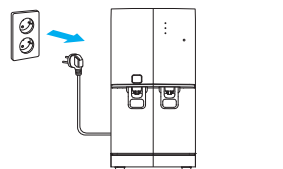
**CAUTION** DO NOT place heavy items on top of the unit.

※ This can cause the unit to malfunction.



**DANGER** Please disconnect plug from socket before replacing filter.

※ Failure to do so may cause fire or electric shock.



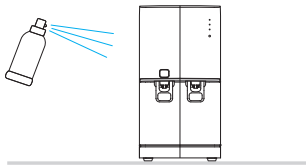
# Precautions

## Precautions for Use



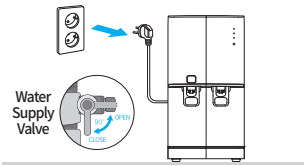
Be careful not to use harmful or abrasive chemicals during the cleaning process.

- ※ This could lead to damage or discoloration of the unit.



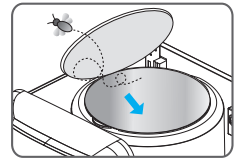
When restarting after shutting off the power or moving the product, open the water supply valve, and use it only after dispensing at least 3 liters of cold/ambient/hot water.

- ※ Failure to do so may cause a fire hazard or water leakage.



MAKE SURE that the cold water tank lid is securely shut, before using.

- ※ Failure to do so can cause insects and/o foreign objects to enter the tank.



- ※ This appliance is not intended for use by persons (including children) with reduced physical, sensory or mental capabilities, or lack of experience and knowledge of the product unless they have been given supervision or instruction concerning the use of the appliance by a person responsible for their safety.
- ※ Children should not play with the appliance.
- ※ This appliance is not intended for use in household and similar applications such as
  - staff kitchen areas in shops, offices and other working environments
  - farm houses and by clients in hotels, motels and other residential type environment
  - bed and breakfast type environment
  - catering and similar non-retail applications



When discarding parts/filter and/or disposing the product entirely, please refer to all local guidelines

- ※ Failure to do so can cause environmental pollution.



When installing the product, always use genuine parts.

- ※ Failure to do so can cause water leakage and product damage.



When replacing filters, always use genuine filters.

- ※ Failure to do so can cause poor performance and poor water quality.



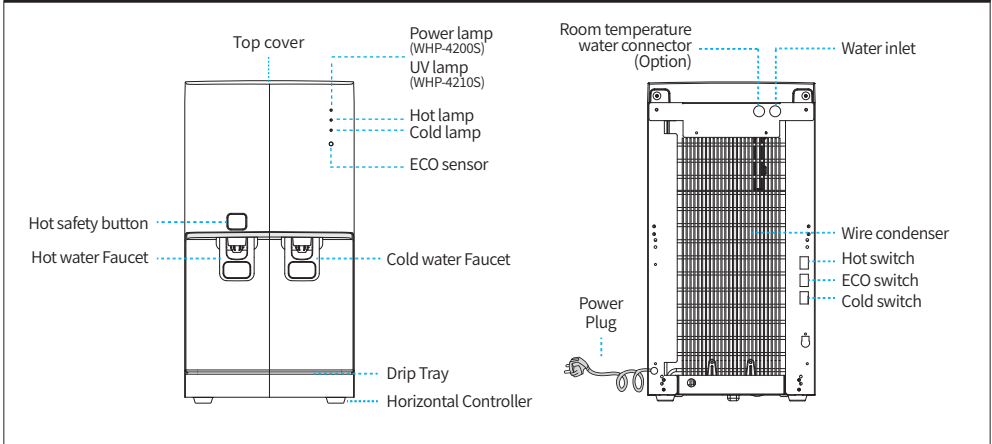
DO NOT install the product in severe and extreme temperatures.

- ※ Failure to do so can cause overheating or freezing.

# Parts identification

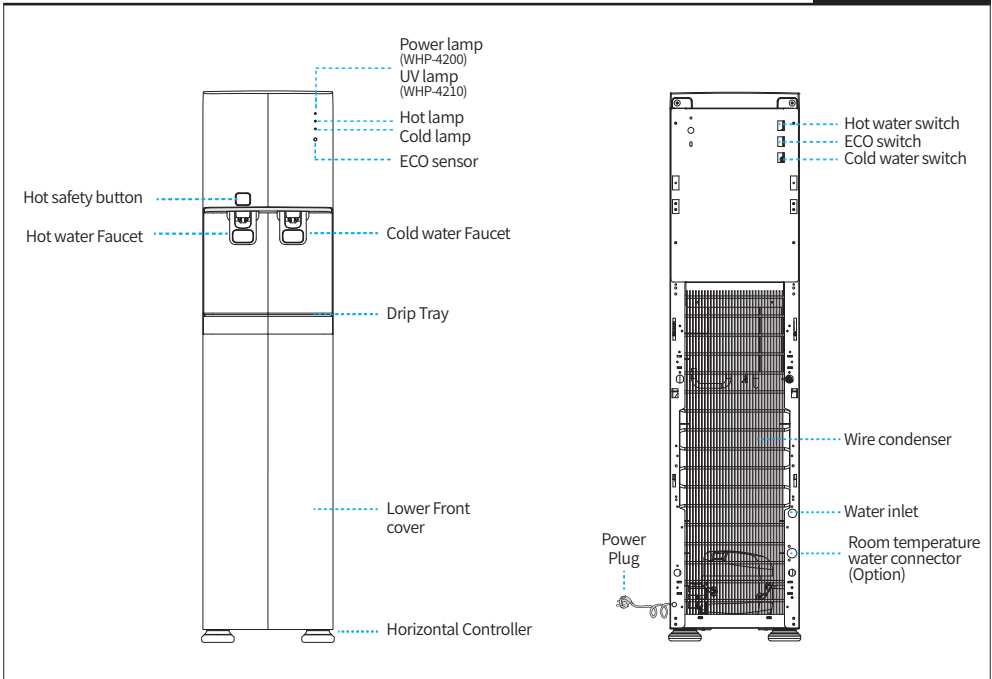
## Model No. WHP-4200S / 4210S

Hot & Cold function



## Model No. WHP-4200 / 4210

Hot & Cold function

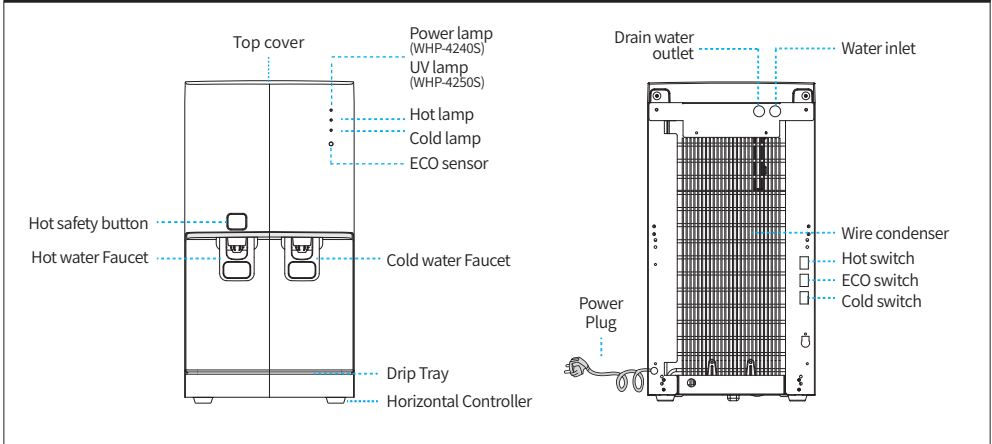




# Parts identification

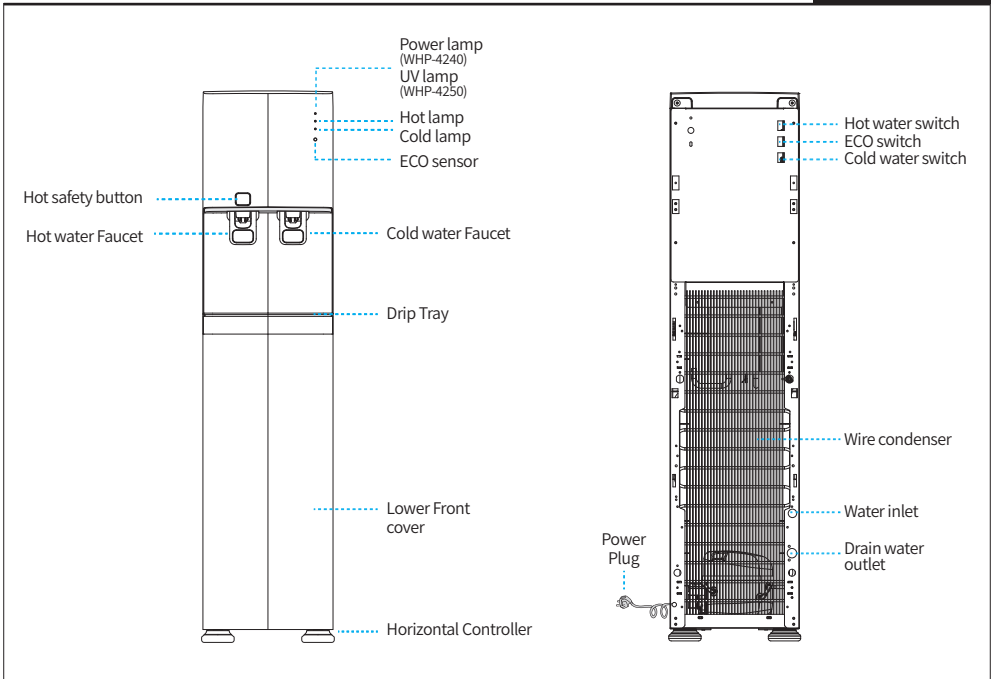
## Model No. WHP-4240S / 4250S

Hot & Cold function



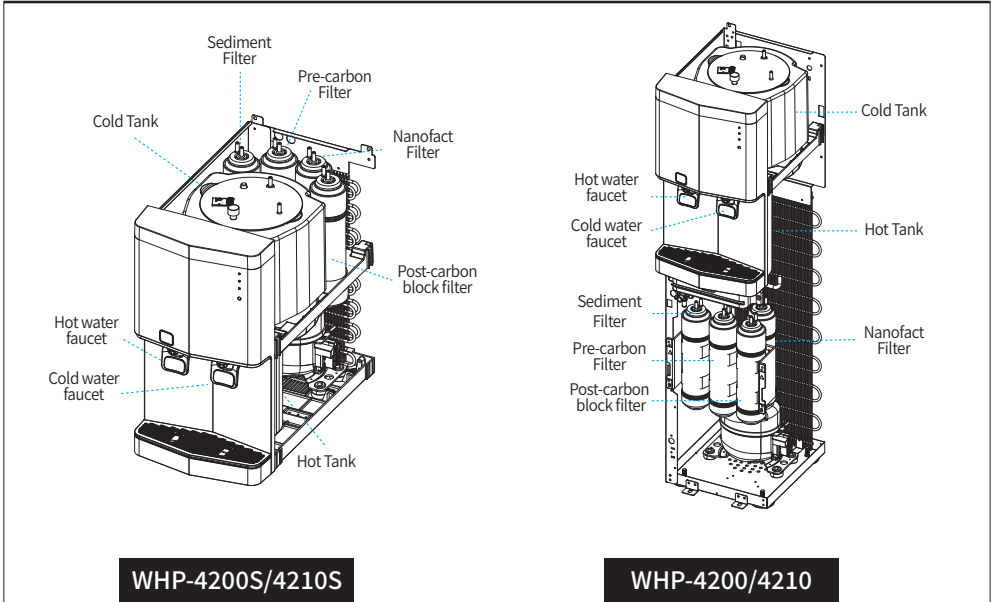
## Model No. WHP-4240 / 4250

Hot & Cold function



# Filtration system

## INTERIOR DIAGRAM

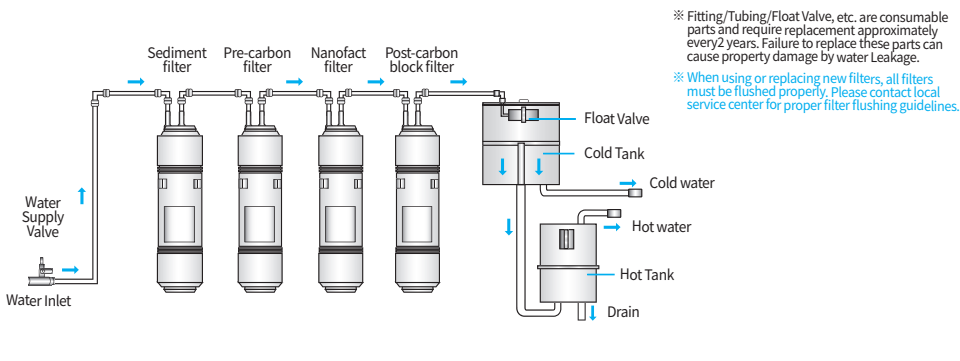


WHP-4200S/4210S

WHP-4200/4210

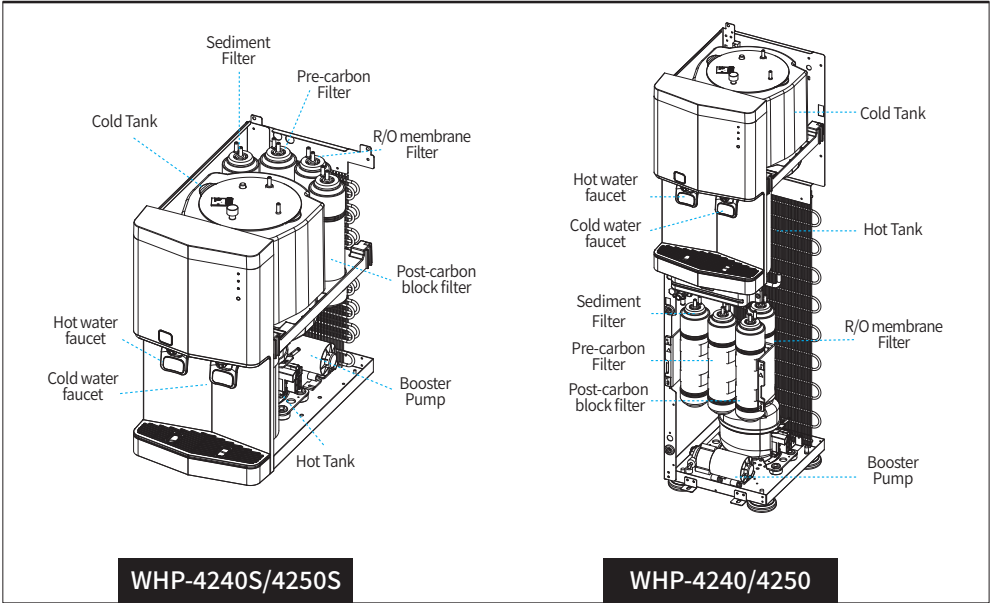
## FILTRATION SYSTEM

DIVISION	1ST STEP	2ND STEP	3RD STEP	4TH STEP
Filter name	Sediment filter	Pre-carbon filter	Nanofact filter	Post-carbon block filter
Expected Repalcement	4 Months	8 Months	20 Months	12 Months



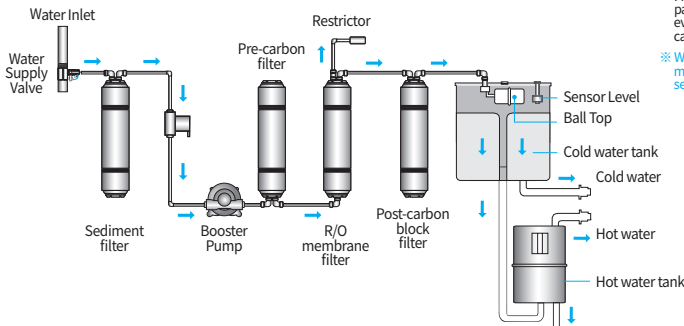
# Filtration system

## INTERIOR DIAGRAM



## FILTRATION SYSTEM

DIVISION	1ST STEP	2ND STEP	3RD STEP	4TH STEP
Filter name	Sediment filter	Pre-carbon filter	R/O membrane filter	Post-carbon block filter
Expected Replacment	4 Months	8 Months	24 Months	12 Months



※ Fitting/Tubing/Float Valve, etc. are consumable parts and require replacement approximately every 2 years. Failure to replace these parts can cause property damage by water leakage.

※ When using or replacing new filters, all filters must be flushed properly. Please contact local service center for proper filter flushing guidelines.

# Features

---

## ◆ Power saving by ECO (Light sensor) function

The ECO sensor automatically stops water heating and save energy by sensing when the office lights are off and therefore the office is empty.

## ◆ Continuous water dispensing function

By this function, you can conveniently dispense a large amount of water continuously.

## ◆ Convenient for household use

Specially designed for household use by supplying purified water of 10 liters per day for a family.

## ◆ Direct connection to the water supply

It can supply water conveniently and at an affordable price.

## ◆ Thorough filtration system

- 1st Step. Sediment Filter (removes contaminants)
- 2nd Step. Pre-carbon Filter (removes residual chlorine)
- 3rd Step. Nanofact Filter(WHP-4200/WHP-4200S),  
R/O membrane Filter(WHP-4210S/WHP-4210S)
- 4th Step. Post-carbon Filter (removes residual toxic gases and odor)

## ◆ Fresh water supply

4~12°C of cold water and 70~90°C of hot water are available at any time.

## ◆ Power saving function

It is possible to switch off either the hot or cold temperature functions when not in use, thus making additional energy savings.

## ◆ Hot water safety features

Anti-overheating feature of hot tank (by manual reset type of bi-metal) and automatic temperature control function(by automatic reset type of bi-metal) helps prevent overheating tank.

## ◆ Water level control function

Automatic water level control function ensures durability of the filters and unit.

## ◆ Efficient and useful

Easy to install and convenient to use.

## ◆ Directly connects to sink faucet (Option)

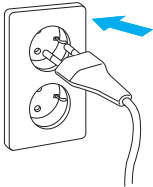
It is possible to connect directly onto the sink faucet (option) in order to use purified filter for cooking and all other uses.

# How to use

※ For your safety and proper use of the product, please read and understand the following before use

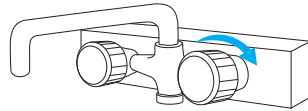
## 1. Plug the power cord.

※ Before plugging, please check if the voltage rate is matching.



## 2. Open the water supply valve.

※ If water supply valve is closed, the water purifier doesn't work.  
(Except in case of leaving the system unused for an extended period, leave the valve open.)

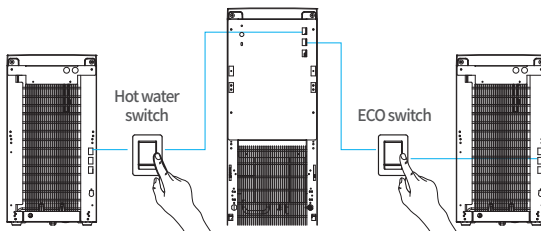


### 1) How to use ECO function

- ① Turn on the ECO switch at the back of the unit.
- ② When the ECO switch is turned on, the hot water light shows orange.
- ③ When the ECO function is in operating, the hot water lamp will change to on green.  
※ The ECO sensor automatically stops water heating to save energy costs when it detects the office lights have been turned off.

### 2) How to use hot water function

- ① Turn on the hot water switch at the back of the unit.
- ② When the hot water switch is turned on, the hot water lamp is on red.
- ③ Please allow approximately 20 minutes for the hot water to heat up after the hot water switch is turned on.
- ④ After hot water function is activated, the hot water temperature controller will automatically adjust the hot water temperature.



Caution

Before turning on the hot water switch, please make sure that water is coming out from the hot water faucet.

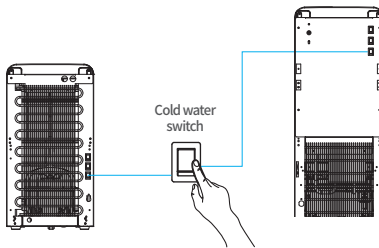
※ Failure to do so can cause malfunction.

※ It's possible to save energy by turning off the hot water switch during periods where only cold water is required.

# How to use

## 3) How to use cold water function

- ① Turn on the cold water switch at the back of the unit.
- ② When the cold water switch is turned on, the cold water light turns blue.
- ③ Please allow approximately 1 hour for the cold water to chill enough after the cold water switch is turned on.
- ④ After cold water function is activated, the cold water temperature controller will automatically adjust the cold water temperature.



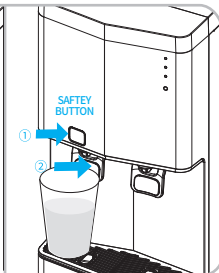
## 4) How to dispense cold water / hot water

Dispensing for cold water



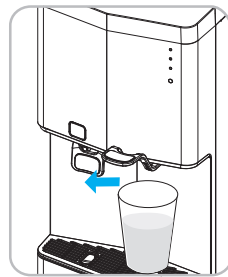
Push the cold water lever to dispense cold water.

Dispensing for Hot water



Press the hot water safety lock button and then push the hot water lever to dispense hot water.

## 5) How to use continuous dispensing for cold water



Pull forward the cold water lever for continuous dispensing of the cold water.



**Caution**

Before turning on the hot water switch, please make sure that water is coming out from the hot water faucet.

※ Failure to do so can cause malfunction.

※ After the installation of the product, please drain out 20 liters of water.

※ When not using the product for a prolonged period, drain 1~2 liters of water before use again.

# UV sterilization system

---

## WHP-4210/ WHP-4210S / WHP-4250 / WHP-4250S

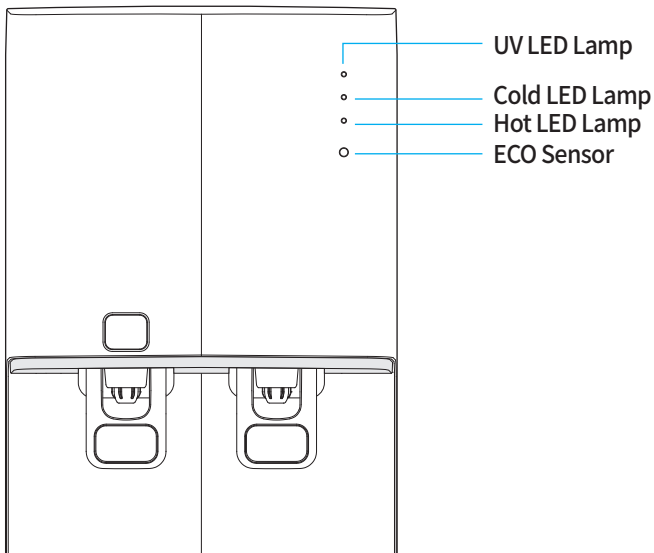
---

1) UV LED sterilization is operated initially when the electronic power cord is connected.

- There is no on/off switch for UV LED operation and it is operated automatically.
- The UV LED function may deteriorate after 5 or more years of use.
- During operation of UV LED, the UV LED lamp flickers on and off.

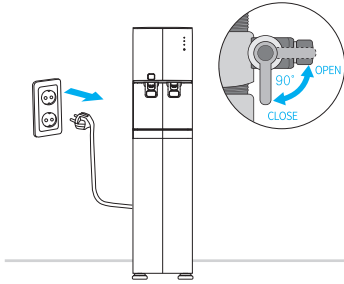
2) STERILIZATION CYCLE : 2 hours per day

- ※ Please make sure to unplug power cord when opening the tank lid.  
- Failure to do so can cause exposure to the light of the UV LED in the cold tank.

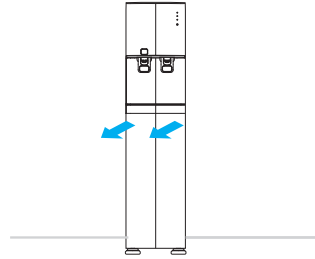


# Filter replacement

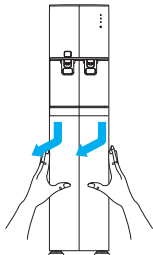
1. Please shut off the water supply and unplug the power cord, prior to installing new filters.



2. Remove the drip tray.

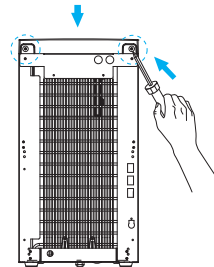


3. Push down on the lower panel and pull forward to remove it.



Model No : WHP-4200

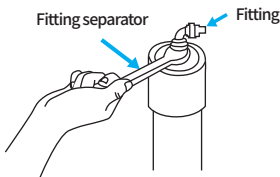
3-1. Remove both left and right screws located at the back of the product in order to remove the top cover.



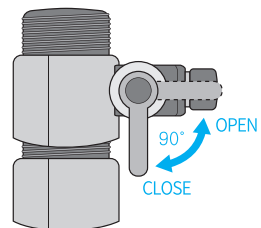
Model No : WHP-4200S

4. Please remove the old filters with a Fitting Separator and insert the new filters in reverse order.

- Always check for water leakage after replacing filters.
- Make sure that each filter is in the proper order according to the purification process.



2. Open the water supply valve.

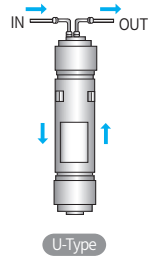




# Filter replacement

- Before replacing any filters, please make sure to pull the power cord out and close the water supply valve.

- Black carbon dust powder may come out after initial installation or replacement of filters.  
(It is simply the fine powder of activated carbon that improves the taste of water and does not have any affect on the human body.)
- When using the product for the first time or after replacing the filters, please use the product after performing a "water flushing" of at least 10l and until the water is running clear.  
(What is water flushing? Upon first use of the filter, this is the process to remove any alien substances such as dust from the water path by passing water through them.)
- It's recommended to clean the inside of inside of the water tank regularly to ensure maximum hygiene.



- According to the filter replacement cycle, replace filters regularly.
- If filters are not regularly replaced, it could degrade the water quality.
- The filter replacement cycle may vary depending on feed water quality and consumption.
- Even if your water consumption is low, following regular filter replacement cycle is recommended.
- The effective filtration amount means the minimum processing capacity at which contaminants can be effectively removed without cleaning, regenerating, or replacing the filter.
- Recommended water consumption : 10ℓ / a day (Based on a family of four.)

# Troubleshooting Guide

※ Please check the following prior to contacting the After Sales Center.

Problem	Cause	Solution
<b>Insufficiently heated water</b>	Low power supply	Check voltage rate.
	Hot water switch off	Check to make sure that the Hot water switch is turned on.
<b>Insufficiently chilled water</b>	Low power supply	Check voltage rate.
	Cold water switch off	Check to make sure that the Cold water switch is turned on.
<b>No water comes out</b>	Filter change needed	Check filter change schedule and contact local customer service center.
	Water supply shut off	Unplug the power cord and plug back in to restart the system.
	Tubing Blockage	Check the tubing to make sure that it is not bent or kinked preventing water flow.
<b>No heating</b>	Temperature Controller Shut Down/ Heater Malfunction	Turn off Hot water switch and contact local customer service center. (Temp. Controller automatically shuts off power supply to Hot water tank to prevent overheating.)
<b>Abnormal hot &amp; cold water temperatures</b>	Heavy water Consumption	High volume of water consumption will cause the water temperatures to fluctuate. Please allow 5~10 minutes for the temperatures to recover.
<b>Noisy sound</b>	Compressor Operating sound	When the compressor is activated, it is normal to hear sounds of the refrigerant flowing through the system.

# Troubleshooting Guide

※ Please check the following prior to contacting the After Sales Center

Problem	Cause	Solution
<b>Decreased water production</b>	Filter need to be replaced	Replace filters.
	Low pressure feed water	If low pressure water is supplied to unit, lower amount of filtered water is produced.
<b>Water leakage</b>	Low power supply	Close the water supply valve and contact customer service center.
<b>Unpleasant water taste or odors</b>	Life of post carbon block filter expired	Replace the post carbon block filter and use the product after performing 'Water Flushing' at least 10 ℓ until the water runs clear from the faucet.
	Cold tank is not cleaned	Empty the residual water in the cold tank and clean.
	Water has been stored in an inappropriate condition for a prolonged period	Replace all the filters and clean cold tank.
<b>Particles in water</b>	It may be bubbles when dispensing water	After 10 minutes, if the particles remain, contact customer service center.

※ If a problem occurs, contact a customer service center and get filter replacement or repair service.

※ We can not take responsibility for any damage caused by replacing filters by third party who is not our.

# Cleaning method

## COLD TANK AND HOT TANK CLEANING

1. Shut off water supply valve and unplug power cord.
2. Drain all water in the cold tank by dispensing it from the cold water nozzle.
- 3-1). Stand Type [WHP-4200] Remove the lower panel to access drain valve and open drain valve to drain water completely.  
(Please be careful when draining out the Hot Water as it may cause severe burns.)
- 3-2). Countertop Type [WHP-4200S] Remove side panel to access drain valve and open drain valve to drain water completely.  
(Please be careful when draining out the Hot Water as it may cause severe burns.)
4. Unscrew the two screws on the left and right at the back of the product and remove the top cover. Then remove the Cold Tank Cover.  
(Please be careful not to damage the rubber packing when removing the Cold Tank Cover. Also, the Cold Tank is made out of stainless steel. Please use caution to prevent injury.)
5. Clean the cold tank by flushing it out with water.  
(Make sure to close the drain valve when done.)
6. Drain out the cleaning water completely by pulling the cold lever to forward
7. Open Water Supply Valve and check for any water leakage until the Cold Tank is completely full. Then, re-assemble the top cover.
8. Please monitor the product for a day to check for leakage.

※ Please contact local customer service center for cleaning service if the product has not been used for an extended period of time.

※ CAUTION: Please contact local customer service center. DO NOT attempt to do by yourself.

## Cleaning Cycle

Cleaning	Cycle	Method
Exterior	Once a week	Clean the exterior with water-soaked, soft cloth. (Never use harsh chemicals to clean the unit.)
Drip tray	Frequently	Frequently clean the drip tray with a neutral detergent.
Fitting/ Tubing	At least every 2 years	Change the fitting and tubing once every two years when replacing filters.
Water faucet	Daily	Detach the hygiene guard by turning it counterclockwise and rinse in running water. When you attach the hygiene guard again, fix it firmly, to prevent risk of leaking. (If there is damage on the hygiene guard, please replace.)



# Specifications

Product Name	HOT & COLD WATER PURIFIER	
Model No.	WHP-4200 / WHP-4210 WHP-4240 / WHP-4250	WHP-4200S / WHP-4210S WHP-4240S / WHP-4250S
Power Supply	AC 120V, 220-240V, 50/60Hz	
External dimensions	260(W)*370(D)*1100(H)mm	260(W)*460(D)*495(H)mm
Recommended water consumption	10ℓ / a day (Based on four people)	
Cold water capacity	Abt. 1.8ℓ	Abt. 1.8ℓ
Cold water temperature	about 4°C-12°C	
Motor power consumption	0.6A	
Heater power consumption	430W – 510W	
Hot water capacity	Abt. 1.8ℓ	Abt. 1.4ℓ
Hot water temperature	70°C- 90°C	
Service condition	Working pressure : 98-490kPa	
	Working temperature : 5~35°C	
	Usable feed water : Potable	
	Indoor use only (Household / Office)	

## ■ FILTRATION SYSTEM

Model No.		WHP-4200 / WHP-4200S WHP-4210 / WHP-4210S	WHP-4240 / WHP-4240S WHP-4250 / WHP-4250S
FILTRATION SYSTEM	Sediment filter (P.P)	○	○
	Pre-carbon filter (Activated carbon)	○	○
	Nanofact filter (Cellulose, Activated carbon)	○	
	R/O membrane filter (Polyamide)		○
	Post-carbon block filter (Activated carbon)	○	○

# Warranty Card

## PRODUCT WARRANTY

Product	Model	<input type="checkbox"/> WHP-4200/4200S <input type="checkbox"/> WHP-4210/4210S <input type="checkbox"/> WHP-4240/4240S <input type="checkbox"/> WHP-4250/4250S	
	Date of Manufacture		
Date of Purchase	Year	Month	Day
Customer's Name			
Dealer's Name			

### WARRANTY GUIDE

1. The warranty period is 12 months from date of purchase.
  2. In the following circumstances, the product will be repaired at cost.
    - a) After expiry of free warranty period.
    - b) Malfunction caused by careless or abnormal use.
    - c) Malfunction caused by natural disaster.
    - d) In case this manual has been lost.
-

# MEMO

# MEMO